

## ZETLAND, NSW

501/28 Ebsworth Street

**2** BED **2** BATH **1** CAR 

### Mirvac's 'Ebsworth' - NOW LEASING

Introducing "Ebsworth" - Real Estate Services by Mirvac has to offer a range of 1, 2 and 3 bedroom apartments in Mirvac's first release within Green Square.

These apartments offer;

- Large bedrooms with floor to ceiling built ins
- Full kitchen, reconstituted stone bench tops
- Level 5, 91sqm including large balcony
- Internal laundry with dryer included
- Secure parking in basement
- On-site management for ongoing support

To view our full selection of available apartments visit - [www.resbymirvac.com.au](http://www.resbymirvac.com.au)

**800**

**Contact:**

Matthew Matthews  
02 8588 8888  
0418 266 590

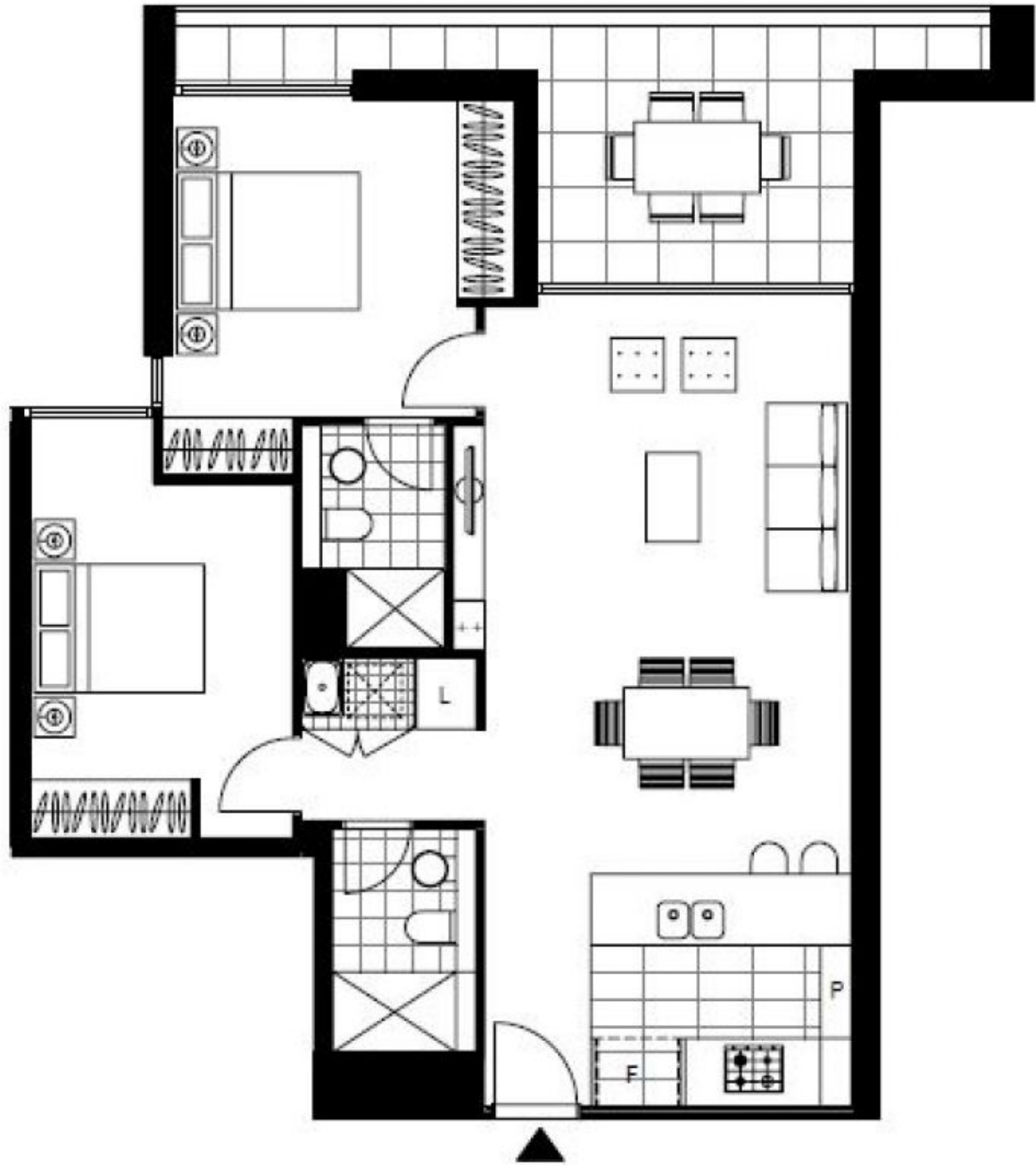
**Type:**

Apartment

**Date Available:** 10/03/2017

**Bond:** \$3200

<https://www.resbymirvac.com>



LEVEL 5

Plans shown are only indicative of layout. Dimensions are approximate.

**ZETLAND, NSW**  
501/28 Ebsworth Street