



GLEBE, NSW

2405/7 Scotsman Street

2 BED **2** BATH **1** CAR 

Spacious 2-Bedroom Apartment with Parking in Harold Park

This 101sqm, 4th floor Apartment features:

- Spacious bedrooms with generous built-in wardrobes
- Open-plan living and dining area, leading to the balcony
- Modern kitchen with stone benchtops and Miele appliances
- Study nook, perfect for home office
- Sleek bathrooms with vanity storage, bath in ensuite
- Large balcony, perfect for entertaining
- Internal laundry with washer and dryer included
- Secure car space and storage cage included
- Ducted A/C, video intercom and NBN connectivity
- 450m to the Heritage-listed Tramsheds, light rail station and public transport

\$700 per week

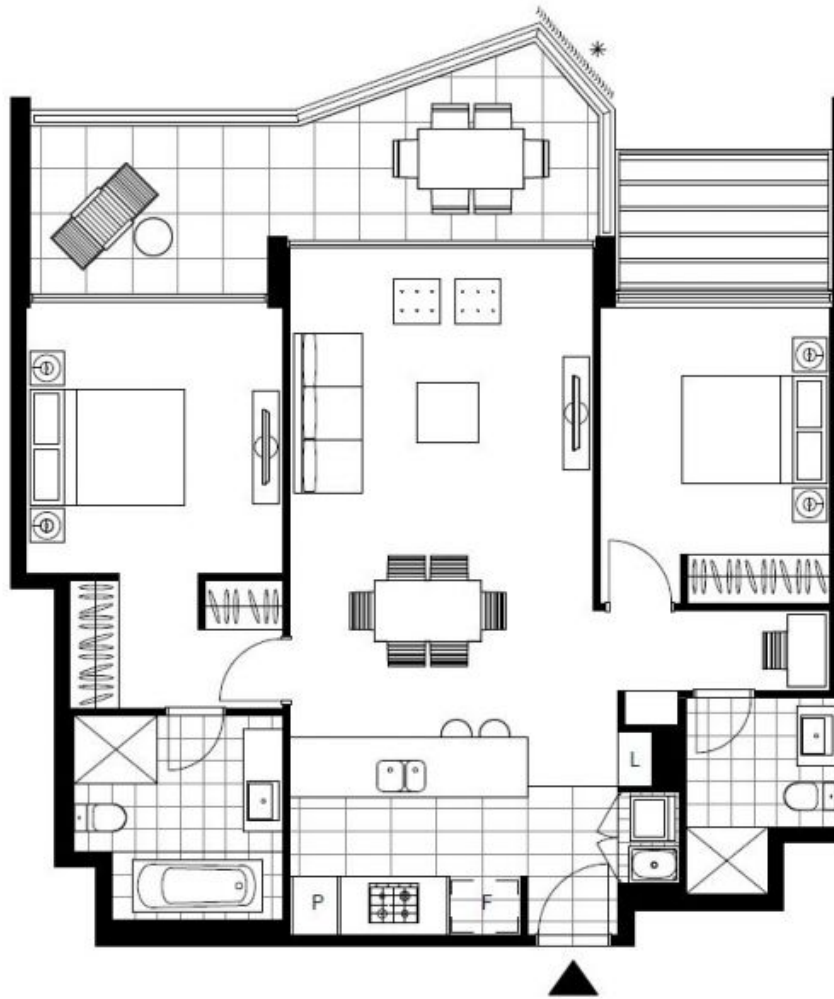
Contact: Naz Sabzpouri
02 8588 8888
0401 545 440

Type: Apartment

Date Available: 16/09/2020

Bond: \$2880

<https://www.resbymirvac.com>



Plans shown are only indicative of layout. Dimensions are approximate.

GLEBE, NSW
2405/7 Scotsman Street