



DOCKLANDS, VIC
1005/60 Lorimer Street

1 BED **1** BATH **1** CAR



Find Your New Home in the Coveted Yarra's Edge Precinct

Checking off all the things you're looking for in a luxury Docklands apartment including chic and elegant style, marina views, and a stunning location in the Yarra's Edge precinct, this north-facing one bedroom residence is simply perfect.

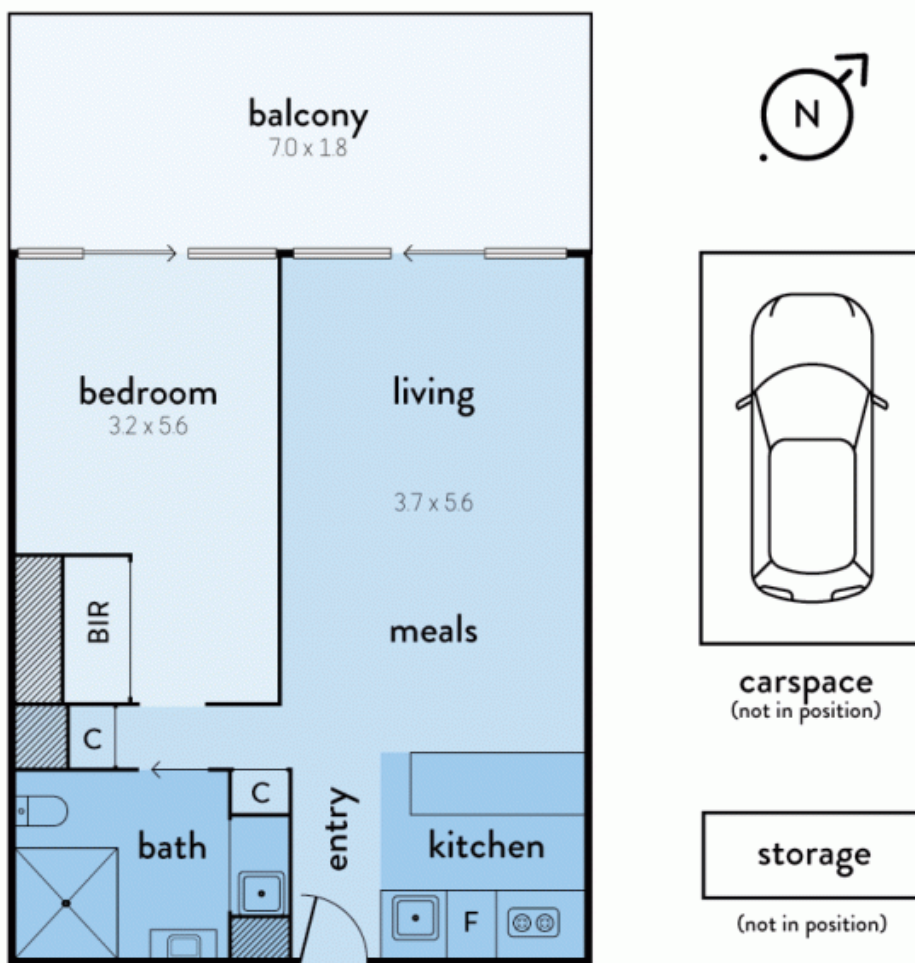
This impressive riverside pad is an ideal choice for city workers, keen owner-occupiers, or even those looking for an investment property. The apartment is located in the superb and highly sought-after Yarra's Edge hub, which impresses with fantastic restaurants and bars down on South Wharf including The General Assembly, The Boatbuilders Yard, and Munich Brauhaus. You also have easy access to Crown Casino, Victoria Harbour precinct, DFO South Wharf, Southern Cross Station, and trams on Spencer Street and Flinders Street.

\$550,000 - \$590,000

Contact: Baden Lucas
03 9645 1199
0418 888 751
Baden Lucas
03 9645 1199
0418 888 751

Type: Apartment
Sold Date: 05/04/2017
<https://www.resbymirvac.com>

1005/60 LORIMER STREET, DOCKLANDS



Plans shown are only indicative of layout. Dimensions are approximate.

The above plan is an artist's impression only, it includes elements that are for display purposes and may not be to scale. Dimensions are approximate and every care has been taken to verify the accuracy of details.

DOCKLANDS, VIC
1005/60 Lorimer Street