

GLEBE, NSW

2308/7 Scotsman Street

1
BED

1
BATH



Garden-facing 1-Bedroom Apartment in Harold Park

This 57sqm, 3rd floor Apartment has to offer:

- Large bedroom with floor to ceiling built-in wardrobe
- Balcony with views over internal gardens
- Stone benchtops and Miele appliances in kitchen
- Modern bathroom with vanity storage
- Open plan living and dining area
- Internal laundry with washer and dryer included
- Ducted A/C, video intercom and NBN connectivity
- 500m walk to buses, the light rail and the Tramsheds

\$530 pw | Call 0401 545 440 to book an inspection

Contact: Naz Sabzpouri
02 8588 8888
0401 545 440

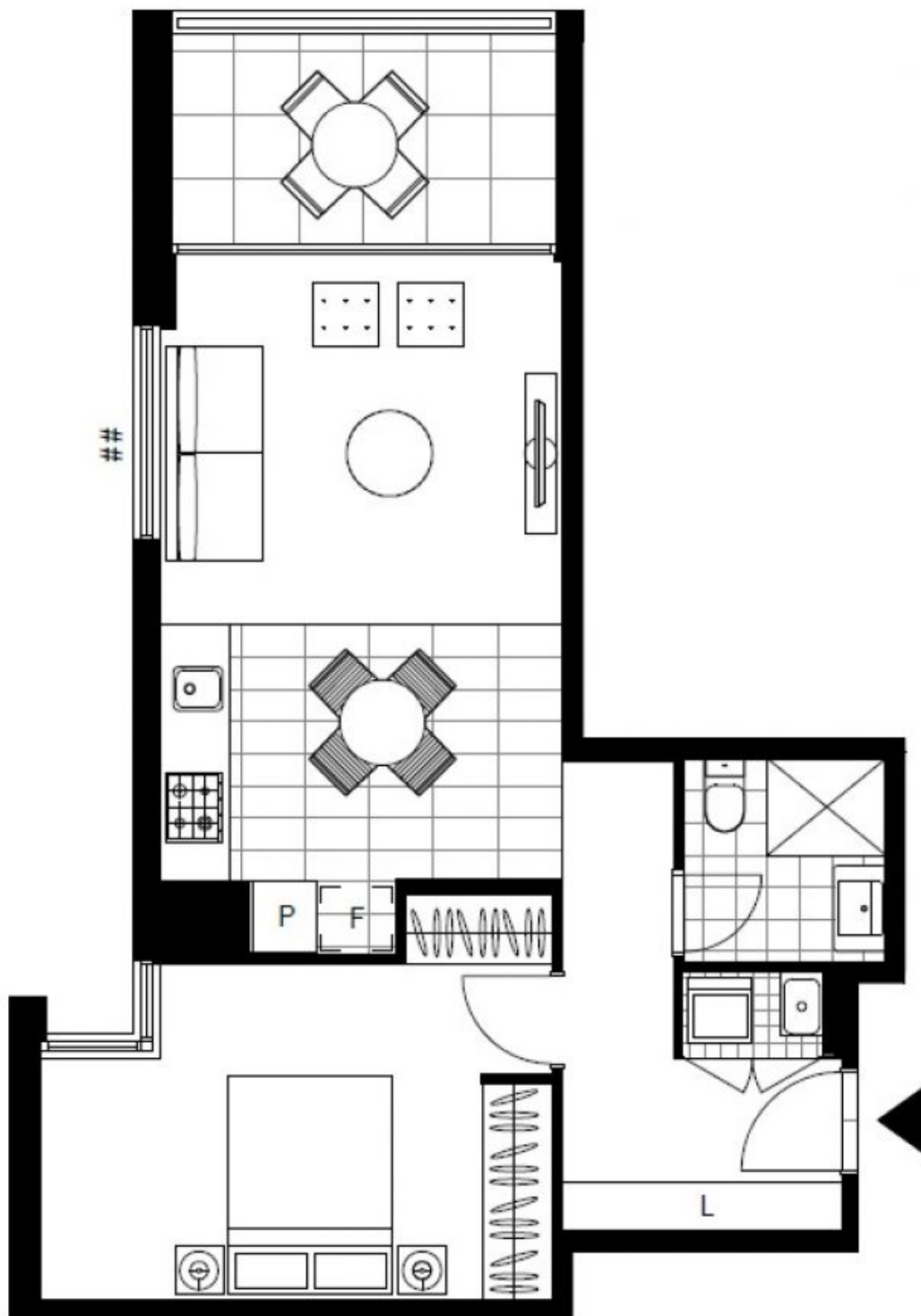
Type: Apartment

Date Available: 30/01/2021

Bond: \$2120

<https://www.resbymirvac.com>

For further information, please contact Real Estate Services by Mirvac on 8588 8888 or email enquiries@resbymirvac.com - Your Onsite Agent!



Plans shown are only indicative of layout. Dimensions are approximate.

GLEBE, NSW
2308/7 Scotsman Street