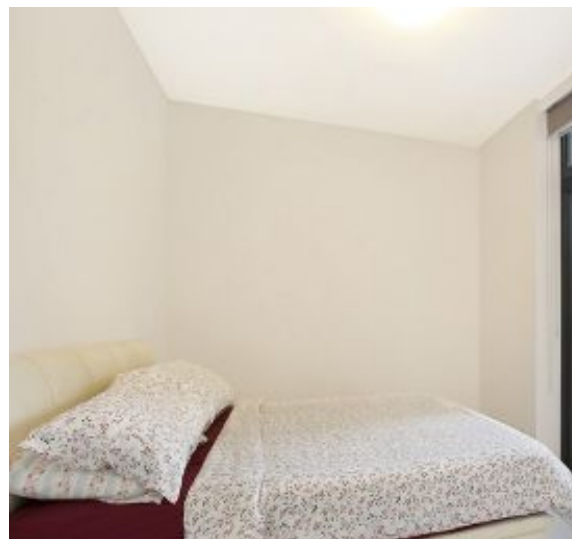


Deposit taken
**More apartments
 available**
 Call Harry 0401 545 440



GLEBE, NSW
 1111/1 Scotsman Street

1 BED **1** BATH



DEPOSIT TAKEN - CALL THE LEASING HOTLINE FOR MORE PROPERTIES - 0401 545 440

This 58sqm, 1st floor Apartment has to offer:

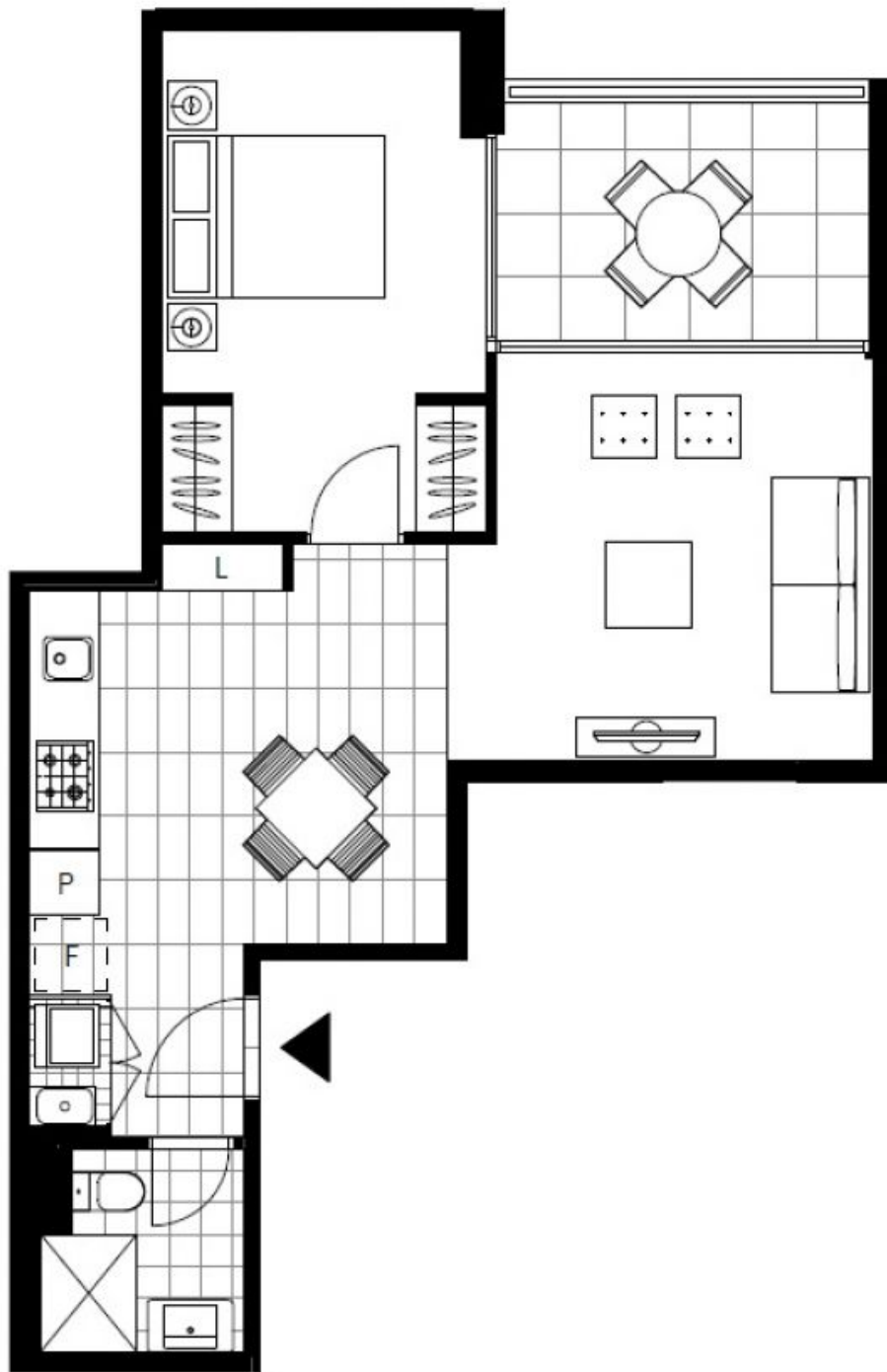
- Large bedroom with floor to ceiling built-in wardrobe
- Spacious balcony with leafy outlook
- Stone benchtops and built-in Miele appliances in kitchen
- Refrigerator included
- Modern bathroom with ample vanity storage
- Open plan living and dining area
- Internal laundry with washer and dryer included
- Secure basement storage cage
- Ducted A/C, video intercom and NBN connectivity
- Walking distance to buses, the light rail and the Tramsheds

DEPOSIT TAKEN

Contact: Naz Sabzpour
 02 8588 8888
 0401 545 440

Type: Apartment
Date Available: 30/09/2020

Bond: \$2000
<https://www.resbymirvac.com>



Plans shown are only indicative of layout. Dimensions are approximate.

GLEBE, NSW
1111/1 Scotsman Street