

GLEBE, NSW

311/6 Maxwell Road

1
BED

1
BATH



Deposit taken- More apartments available- Call Harry
0401 545 440

This 61sqm, 'Maxwell' apartment features:

- Well-appointed bedroom with floor-to-ceiling built-in wardrobe
- Functional tiled open-plan living and dining area, flowing onto North facing balcony
- Sleek kitchen with stone benchtops and built-in Miele appliances
- Stylish bathroom with plenty of vanity storage
- Internal laundry with washing machine and dryer included
- Study nook at entry, perfect for a home office
- Secure storage cage included
- Ducted A/C, video intercom and NBN connectivity
- 450m to the Heritage-listed Tramsheds, light rail and public transport

More apartments available!

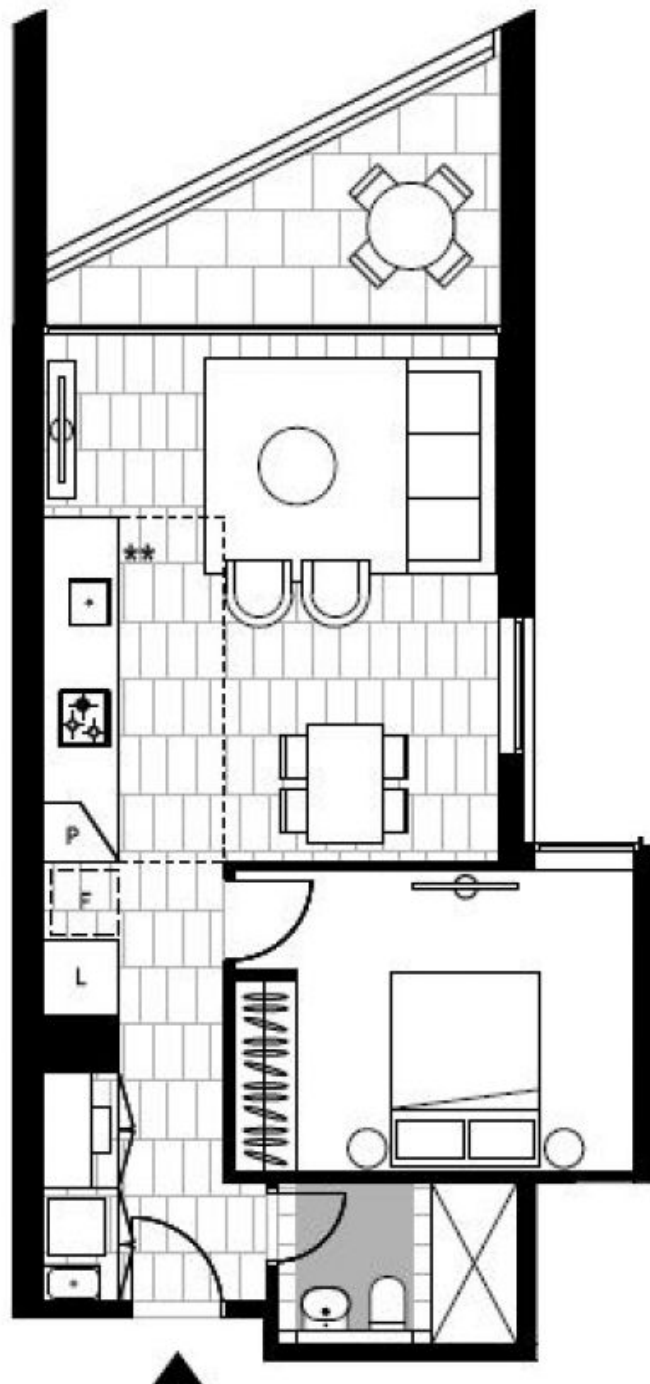
Contact: Naz Sabzpouri
02 8588 8888
0401 545 440

Type: Apartment

Date Available: 11/05/2021

Bond: \$1980

<https://www.resbymirvac.com>



LEVEL 3

Plans shown are only indicative of layout. Dimensions are approximate.

GLEBE, NSW
311/6 Maxwell Road