



GLEBE, NSW

29 Minogue Crescent

1 BED 1 BATH 1 CAR RES

Inspection Cancelled - Deposit Taken! Rare One Bedroom WITH Parking in Harold Park

This ground floor one bedroom apartment has to offer:

- Large separate bedroom with built ins
- Spacious living and dining opening onto terrace
- Ample storage in kitchen with Miele appliances
- Internal Laundry with Washer and Dryer INCLUDED
- Secure basement parking and storage cage
- Close proximity to Light rail, buses and soon to be completed "Tramsheds"

Pets are not permitted.

650

Contact:

Naz Sabzpour

02 8588 8888

0401 545 440

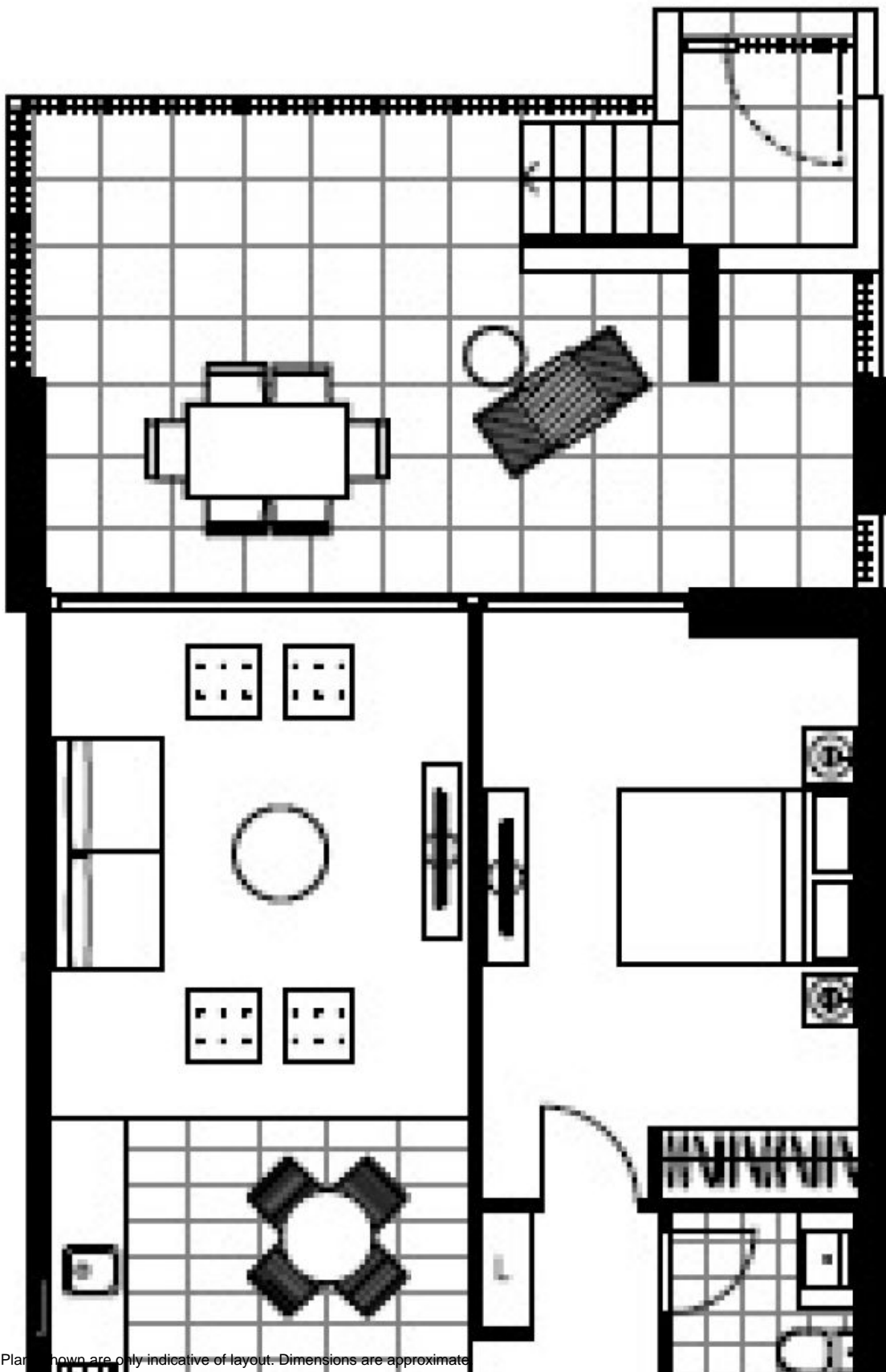
Type:

Apartment

Date Available: 05/09/2016

Bond: \$2600

<https://www.resbymirvac.com>



Plans shown are only indicative of layout. Dimensions are approximate.

GLEBE, NSW
29 Minogue Crescent

