

GLEBE, NSW

29 Minogue Crescent

1
BED

1
BATH

1
CAR



Inspection Cancelled - Deposit Taken! Rare One Bedroom WITH Parking in Harold Park

This ground floor one bedroom apartment has to offer:

- Large separate bedroom with built ins
- Spacious living and dining opening onto terrace
- Ample storage in kitchen with Miele appliances
- Internal Laundry with Washer and Dryer INCLUDED
- Secure basement parking and storage cage
- Close proximity to Light rail, buses and soon to be completed "Tramsheds"

Pets are not permitted.

650

Contact:

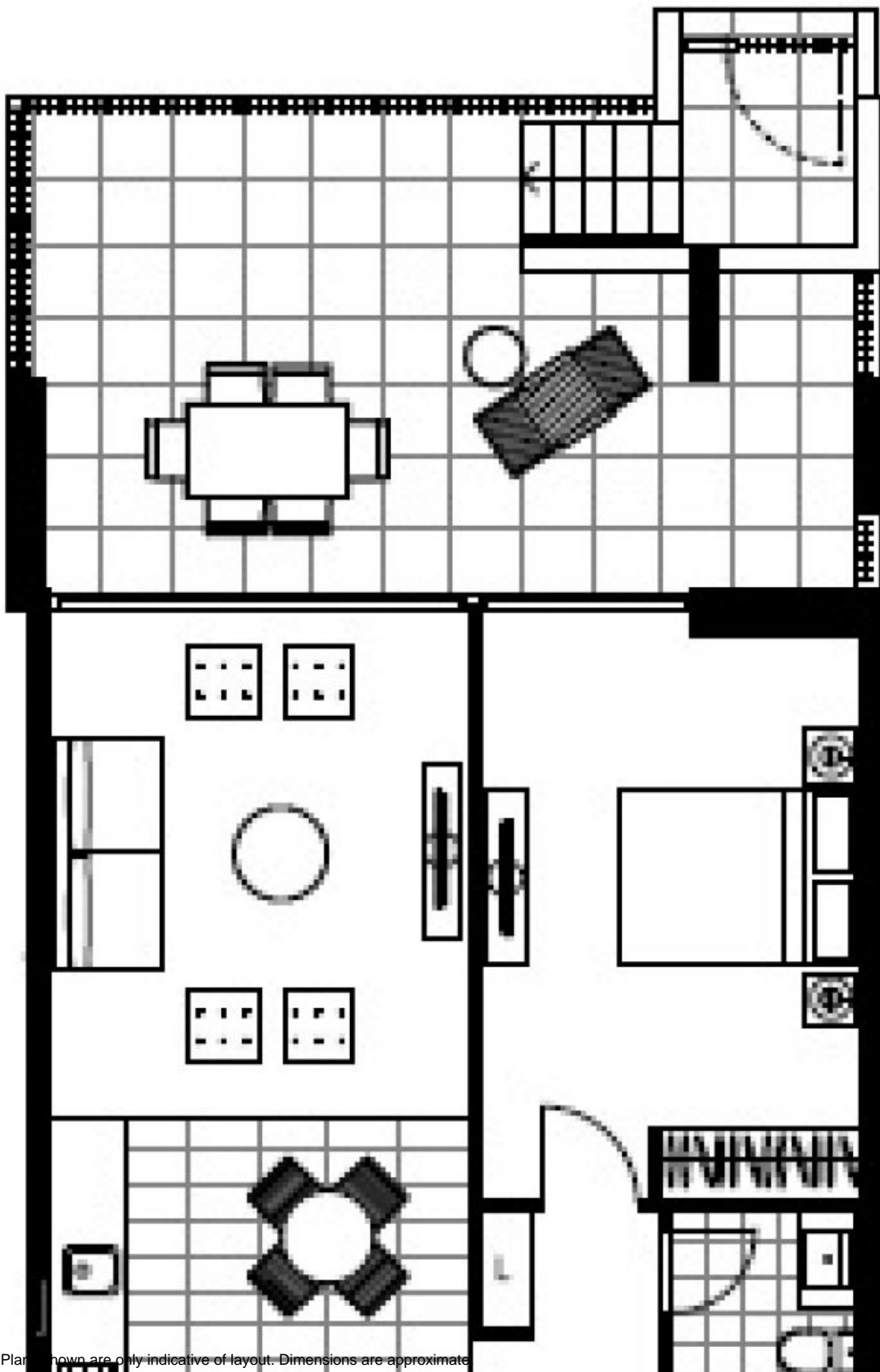
Naz Sabzpouri
02 8588 8888
0401 545 440

Type: Apartment

Date Available: 05/09/2016

Bond: \$2600

<https://www.resbymirvac.com>



GLEBE, NSW
29 Minogue Crescent