



GLEBE, NSW
106/6 Maxwell Road

2 BED **1** BATH **1** CAR 

Harold Park - Maxwell Place

Located within "Maxwell Place", the latest precinct in Mirvac's Harold Park development.

This LARGE 2 bedroom apartment offers:

- 2 bedrooms
- Media
- 1 bathroom
- 1 security car space
- Storage cage
- Large balcony with North Easterly aspect

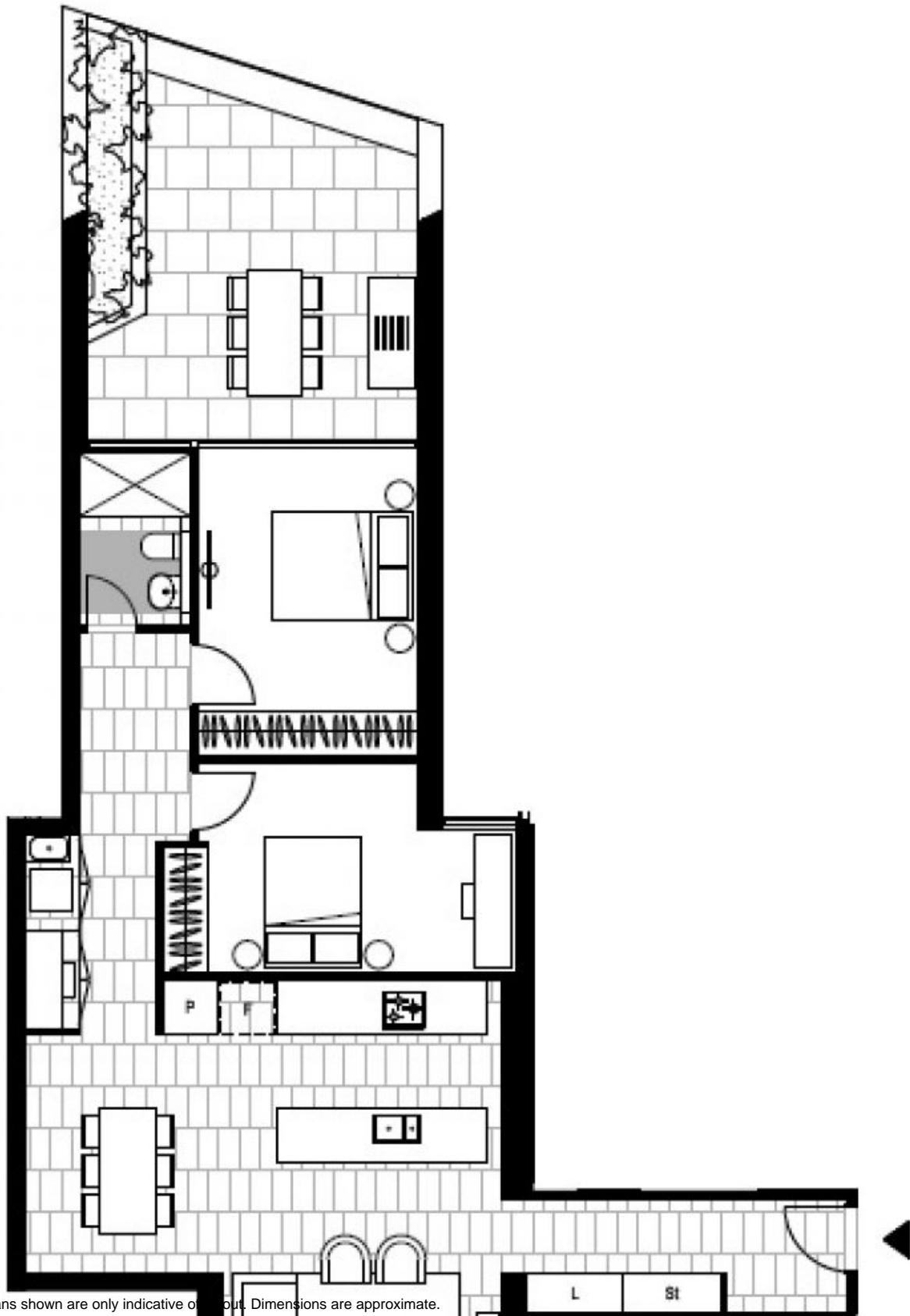
DEPOSIT TAKEN

Contact: Matthew Matthews
02 8588 8888
0418 266 590

Type: Apartment

Sold Date: 04/10/2016

<https://www.resbymirvac.com>



Plans shown are only indicative of layout. Dimensions are approximate.

GLEBE, NSW
106/6 Maxwell Road

LEVEL 1