



GLEBE, NSW

2806/7 Scotsman Street

2 BED **2** BATH **1** CAR 

Top Floor Apartment within Harold Park

This two bedroom apartment located on level 8 has to offer:

- Split bedrooms with ensuite in Master
- Spacious kitchen with ample storage space
- Large outdoor balcony with green outlook
- Internal Laundry with Washer and Dryer included
- Secure basement parking
- Close proximity to Jubilee park station and multiple bus routes

Please contact our office on 8588 8888 to book an appointment today.

790

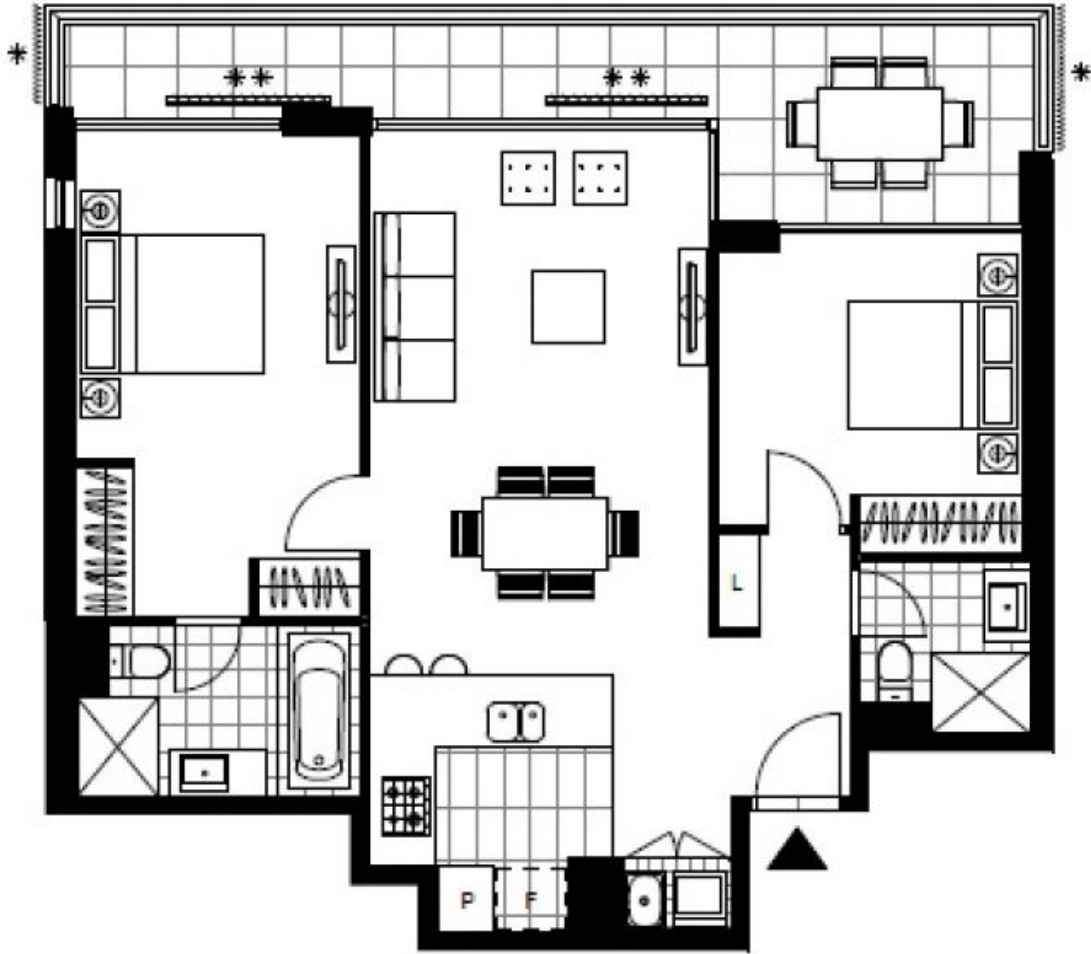
Contact: Matthew Matthews
02 8588 8888
0418 266 590

Type: House

Date Available: 03/09/2016

Bond: \$3160

<https://www.resbymirvac.com>



Plans shown are only indicative of layout. Dimensions are approximate.

GLEBE, NSW
2806/7 Scotsman Street