



## GLEBE, NSW

2806/7 Scotsman Street

**2** BED **2** BATH **1** CAR 

### Top Floor Apartment within Harold Park

This two bedroom apartment located on level 8 has to offer:

- Split bedrooms with ensuite in Master
- Spacious kitchen with ample storage space
- Large outdoor balcony with green outlook
- Internal Laundry with Washer and Dryer included
- Secure basement parking
- Close proximity to Jubilee park station and multiple bus routes

Please contact our office on 8588 8888 to book an appointment today.

**790**

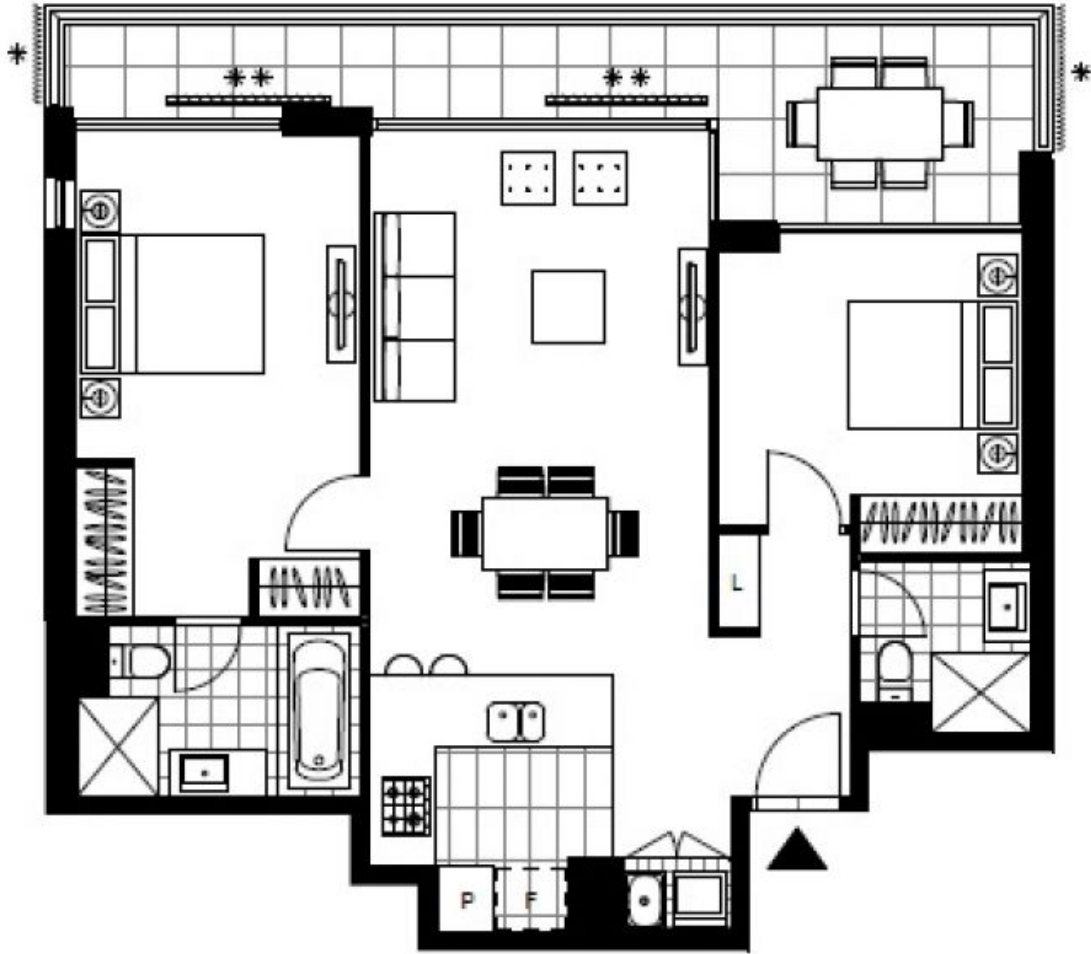
**Contact:** Matthew Matthews  
02 8588 8888  
0418 266 590

**Type:** House

**Date Available:** 03/09/2016

**Bond:** \$3160

<https://www.resbymirvac.com>



Plans shown are only indicative of layout. Dimensions are approximate.

**GLEBE, NSW**  
2806/7 Scotsman Street