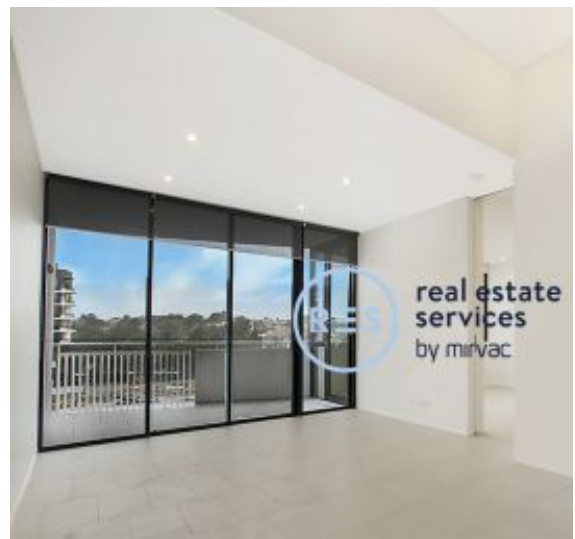


Deposit taken  
**More apartments available**  
 Call Harry 0401 545 440



**GLEBE, NSW**  
 303/6 Maxwell Road

**2** BED **2** BATH **1** CAR 

**Deposit taken- Limited apartments left - Please call Harry on 0401 545 440**

This 97sqm, 2-Bedroom apartment located in Maxwell Place has to offer:

- Spacious living area opening up sunny to balcony
- Large Master bedroom with en-suite and bath
- Built-in wardrobes in both bedrooms
- Modern kitchen with Miele appliances
- Secure car space and storage cage in basement
- Located minutes to the Tramsheds and light rail

**Deposit Taken**

**Contact:** Naz Sabzpouri  
 02 8588 8888  
 0401 545 440

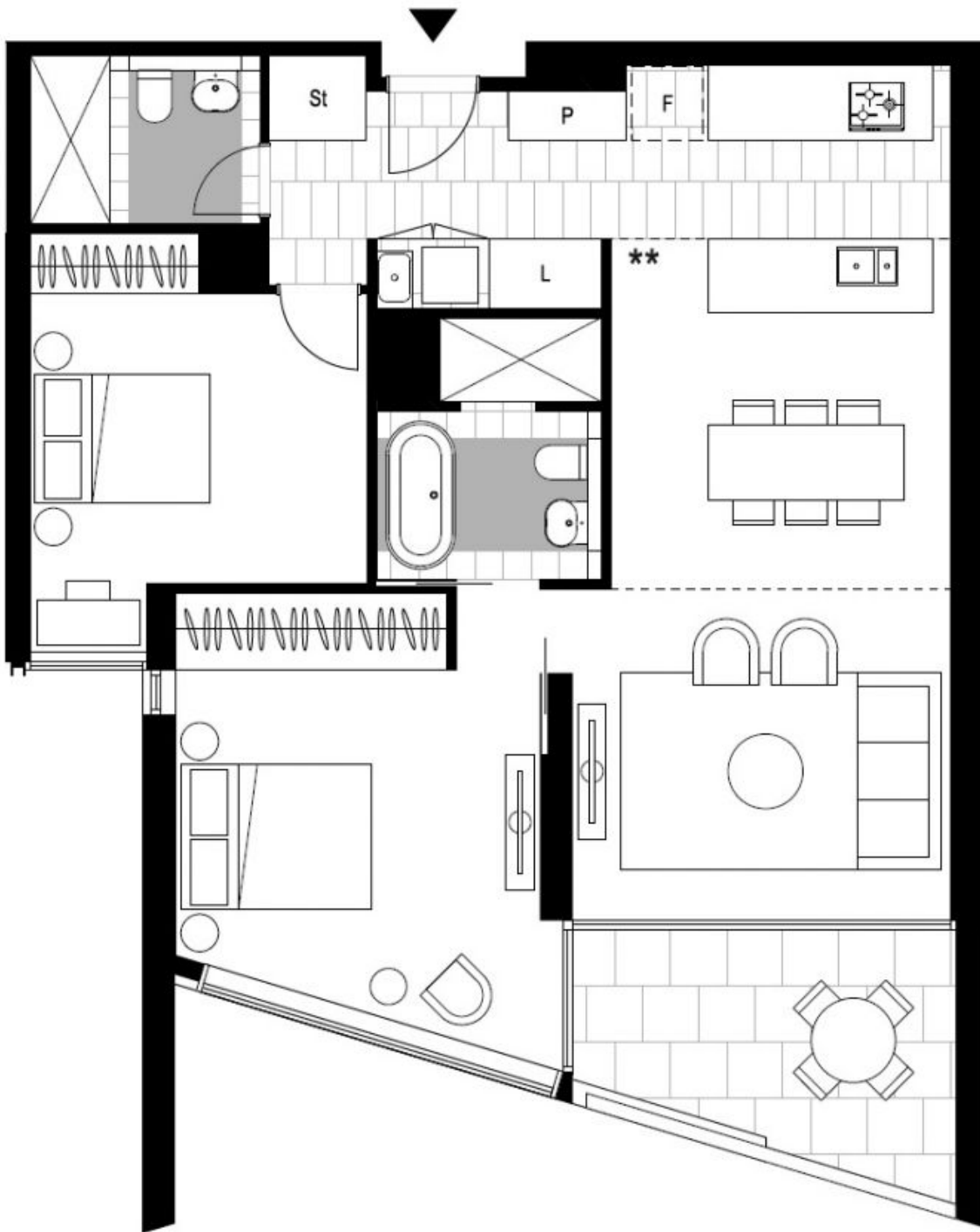
**Type:** Apartment

**Date Available:** 25/11/2020

**Bond:** \$3320

<https://www.resbymirvac.com>

Please contact Real Estate Services by Mirvac on 8588 8888 for more information.



Plans shown are only indicative of layout. Dimensions are approximate.

**GLEBE, NSW**  
303/6 Maxwell Road