

## GLEBE, NSW

310/6 Maxwell Road

**1**  
BED

**1**  
BATH



### Studio Apartment in Maxwell Place

Located within "Maxwell Place", this open plan studio apartment is being offered for sale:

- Open plan living and dining leading to private balcony.
- Abundance of natural light.
- Unique studio bedroom with private partition walls and built-in robes.
- Internal laundry with washing machine & dryer INCLUDED.
- Functional kitchen with stone bench tops and Miele Appliances.
- Basement storage cage.
- Short walk to public transport incl light rail, local shops incl Harold Parks Tramsheds offering a supermarket and cafes / restaurants
- "Maxwell Place" adjoins the park within Harold Park and our popular Tramsheds development offering a supermarket, cafes and restaurants.
- Jubilee Park Light rail is only 100 metres walk. An ideal location.

**\$680,000**

**Council Rates:** \$1,312/year (approx)

**Strata Rates:** \$2,618/year (approx)

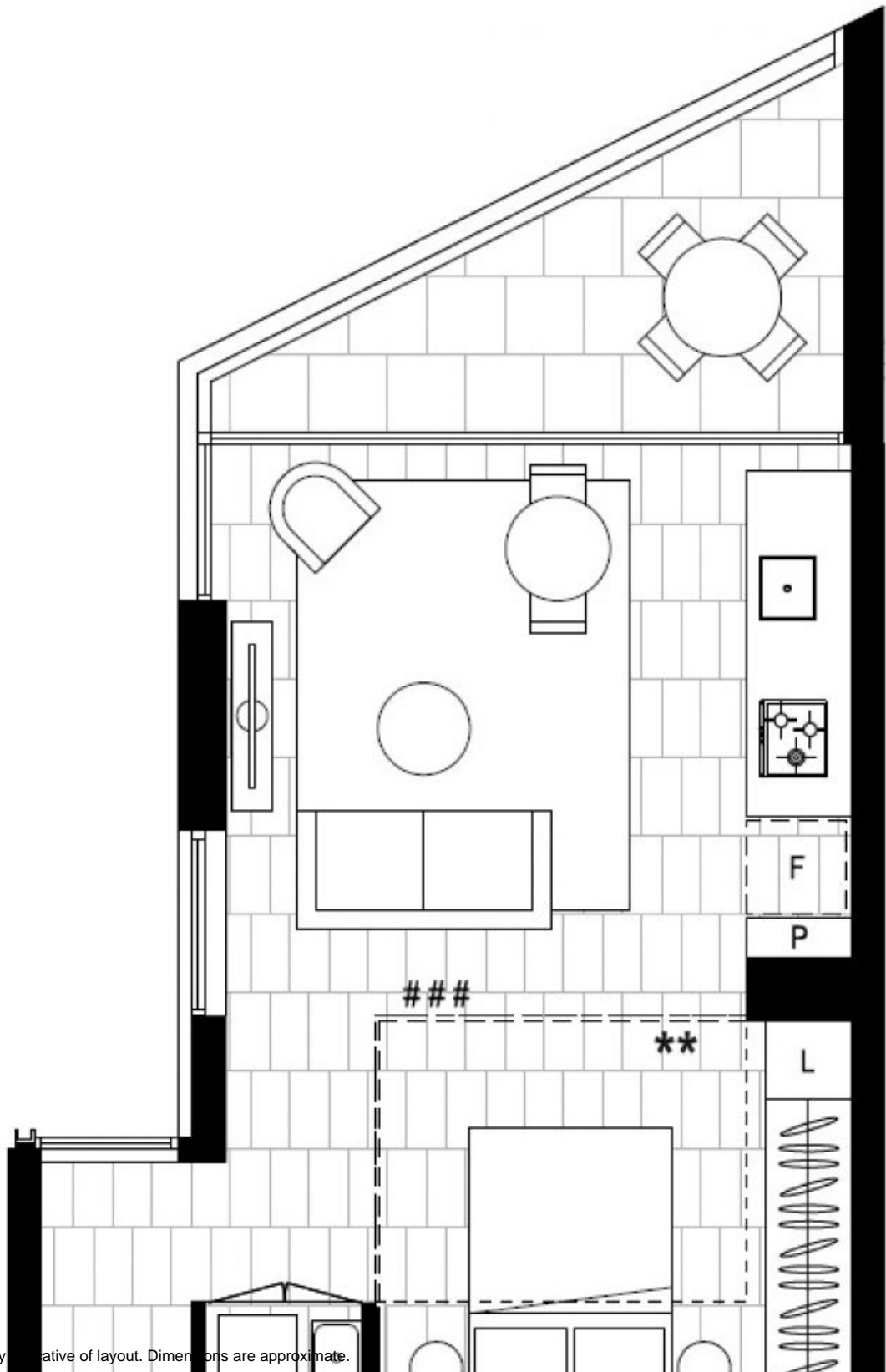
**Contact:** Matthew Matthews  
02 8588 8888  
0418 266 590

**Type:** Apartment

**Date Available:** 18/08/2016

**Sold Date:** 02/09/2017

<https://www.resbymirvac.com>



Plans shown are only illustrative of layout. Dimensions are approximate.

**GLEBE, NSW**  
310/6 Maxwell Road