



**GLEBE, NSW**  
1603/7 Scotsman Street

**2** **2** **1**   
BED BATH CAR

### Deposit Taken

This 133sqm Apartment features:

Impressive 2-Bedroom Apartment in Harold Park

- Spacious bedrooms with generous built-in wardrobes
- Open-plan living and dining area, leading to the balcony
- Stylish kitchen with stone benchtops and Miele appliances
- Ultramodern bathrooms with plenty of storage, bath in ensuite
- Generous wrap around balcony, perfect for entertaining
- Internal laundry with washer and dryer included
- Study nook at entry, perfect for a home office
- Secure car space and storage cage included
- Ducted A/C, video intercom and NBN connectivity
- 300m to the Heritage-listed Tramsheds, light rail station and public transport

### Deposit Taken

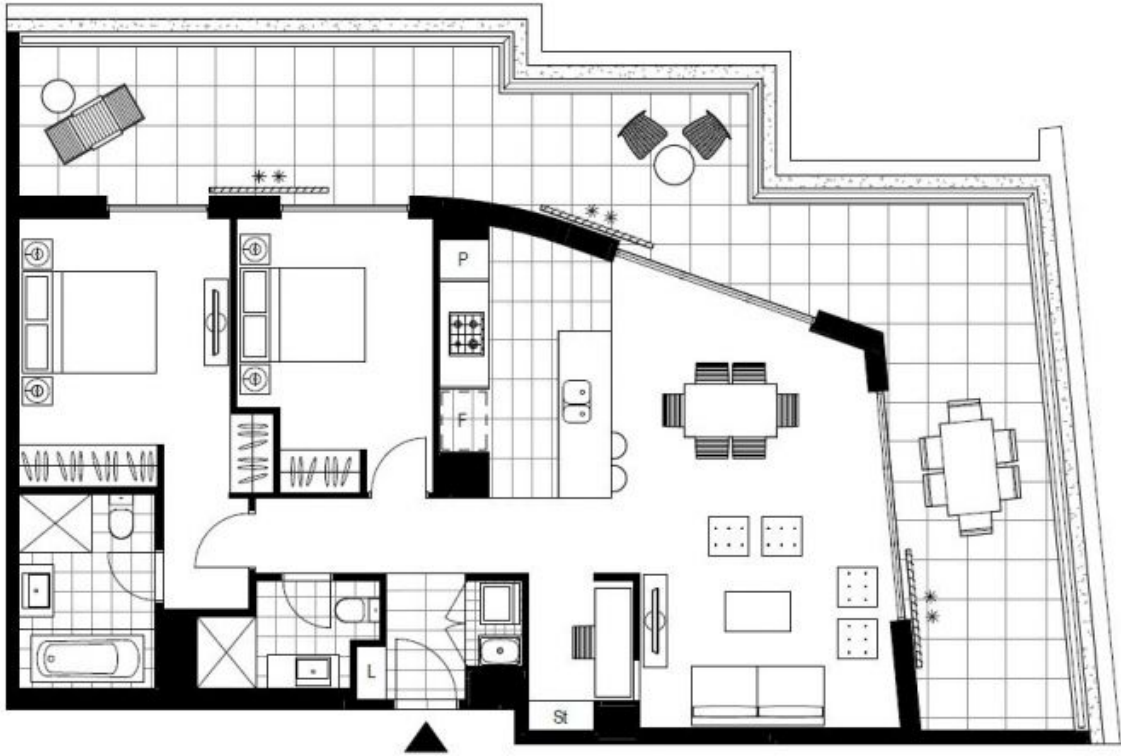
**Contact:** Matthew Matthews  
02 8588 8888  
0418 266 590  
Stuart Nohra  
02 8588 8888  
0432 206 000

**Type:** Apartment

**Date Available:** 02/01/2020

**Bond:** \$3280

<https://www.resbymirvac.com>



Plans shown are only indicative of layout. Dimensions are approximate.

**GLEBE, NSW**  
1603/7 Scotsman Street