

## GLEBE, NSW

703/95 Ross Street

3  
BED

2  
BATH

2  
CAR



### 7th Floor, 3 bedroom apartment, North facing

This superb 3 bedroom apartment in the heart of Glebe has to offer;

- 3 large bedroom with built ins in each
- Master bedroom with en suite bathroom and walk-thru robe
- Chefs style kitchen, Miele appliances
- Internal laundry with washer and dryer included
- Secure storage cage with 2 x parking spaces
- Large wrap balcony, orientating park

Harold Park complex is less than 2.5km from Darling Harbour, within walking distance to the rail, bus stops and shops.  
Our team are taking private inspections daily, contact us on 8588 8888 to make an appointment.

**1100**

**Contact:**

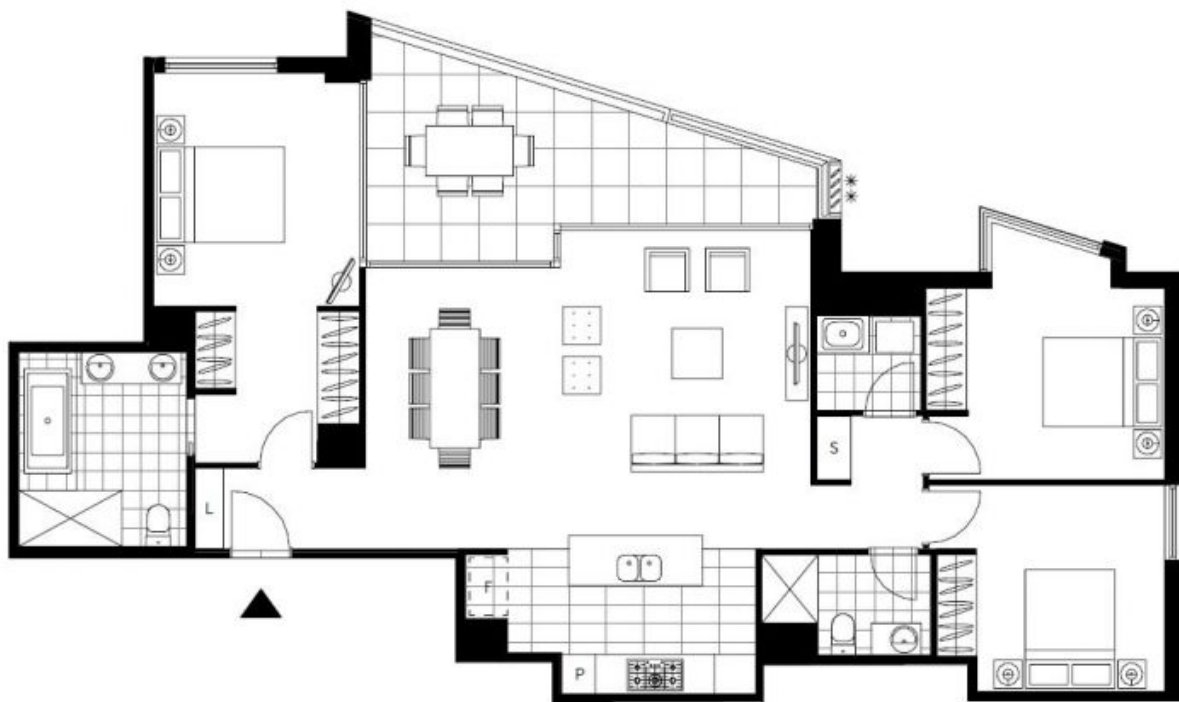
Naz Sabzpouri  
02 8588 8888  
0401 545 440

**Type:** Apartment

**Date Available:** 15/08/2015

**Bond:** \$4400

<https://www.resbymirvac.com>



LEVEL 7

Plans shown are only indicative of layout. Dimensions are approximate.

**GLEBE, NSW**  
703/95 Ross Street