

GLEBE, NSW
303/10 Scotsman Street

1
BED

1
BATH



Deposit Taken | More are available, call our team on: 02 8588 8888

- This 57sqm, 3rd floor Apartment has to offer:
Spectacular North-facing 1-Bedroom Apartment in Harold Park
- Large bedroom with floor to ceiling built-in wardrobe
 - Sunny, north-facing balcony
 - Stone benchtops and Miele appliances in kitchen
 - Modern bathroom with vanity storage
 - Open plan living and dining area
 - Internal laundry with washer and dryer included
 - Secure basement storage cage included
 - Ducted A/C, video intercom and NBN connectivity
 - 500m walk to buses, the light rail and the Tramsheds

Deposit Taken | More are available: 02 8588 8888

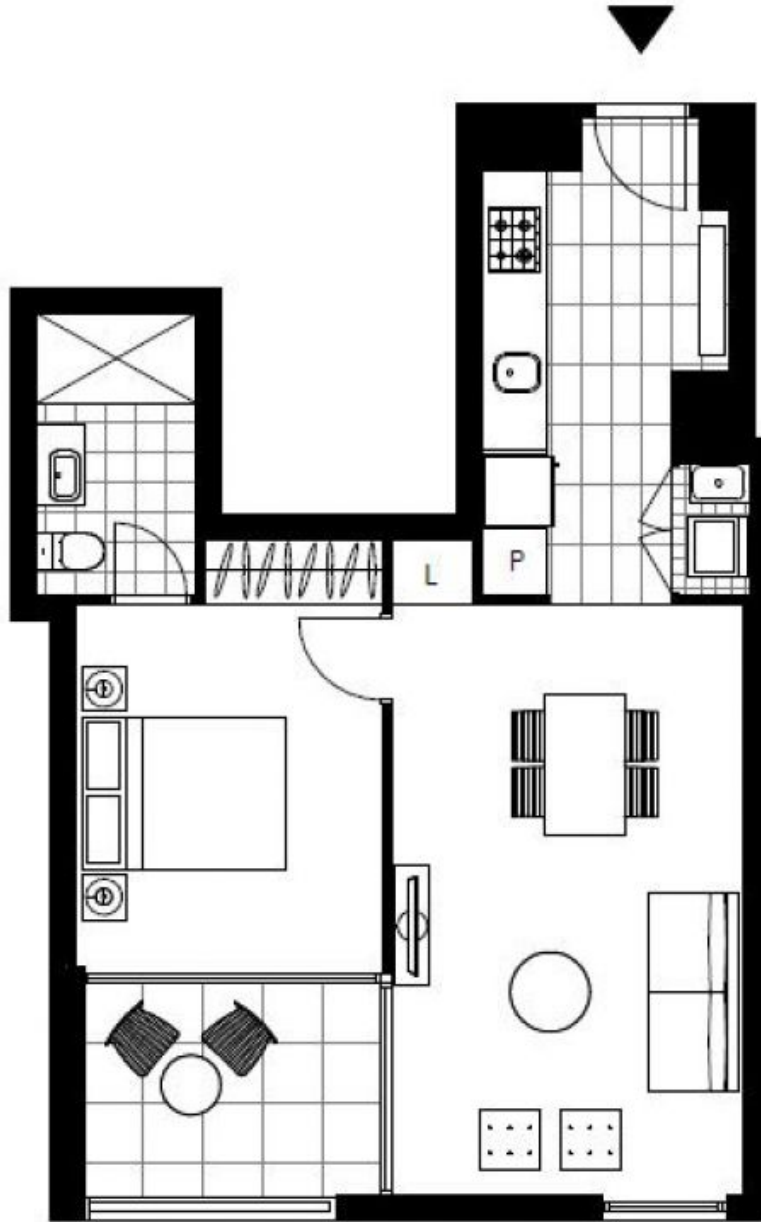
Contact: Naz Sabzpouri
02 8588 8888
0401 545 440

Type: Apartment

Date Available: 12/06/2020

Bond: \$2000

<https://www.resbymirvac.com>



Plans shown are only indicative of layout. Dimensions are approximate.

GLEBE, NSW
303/10 Scotsman Street