



GLEBE, NSW

416/19 Minogue Crescent

3
BED

2
BATH

2
CAR



Deposit Taken | More are available, call our team on: 02 8588 8888

- This HUGE 153sqm, 4th floor Apartment features:
- Over-sized 3-bedroom Apartment in Harold Park
 - Spectacular Three Bedroom with District Views
 - Large bedrooms with generous built in wardrobes
 - Open-plan living and dining area, leading to 2 balconies
 - Modern kitchen with stone bench tops and Miele appliances
 - Sleek bathrooms with plenty of vanity storage, bath in ensuite
 - 4 separate balconies, perfect for entertaining or quiet time
 - Balcony access from main and 3rd bedroom
 - Internal laundry with washing machine and dryer included
 - 2 secure car spaces and storage cage included
 - Ducted air conditioning, video intercom and NBN connectivity

Deposit Taken | More are available: 02 8588 8888

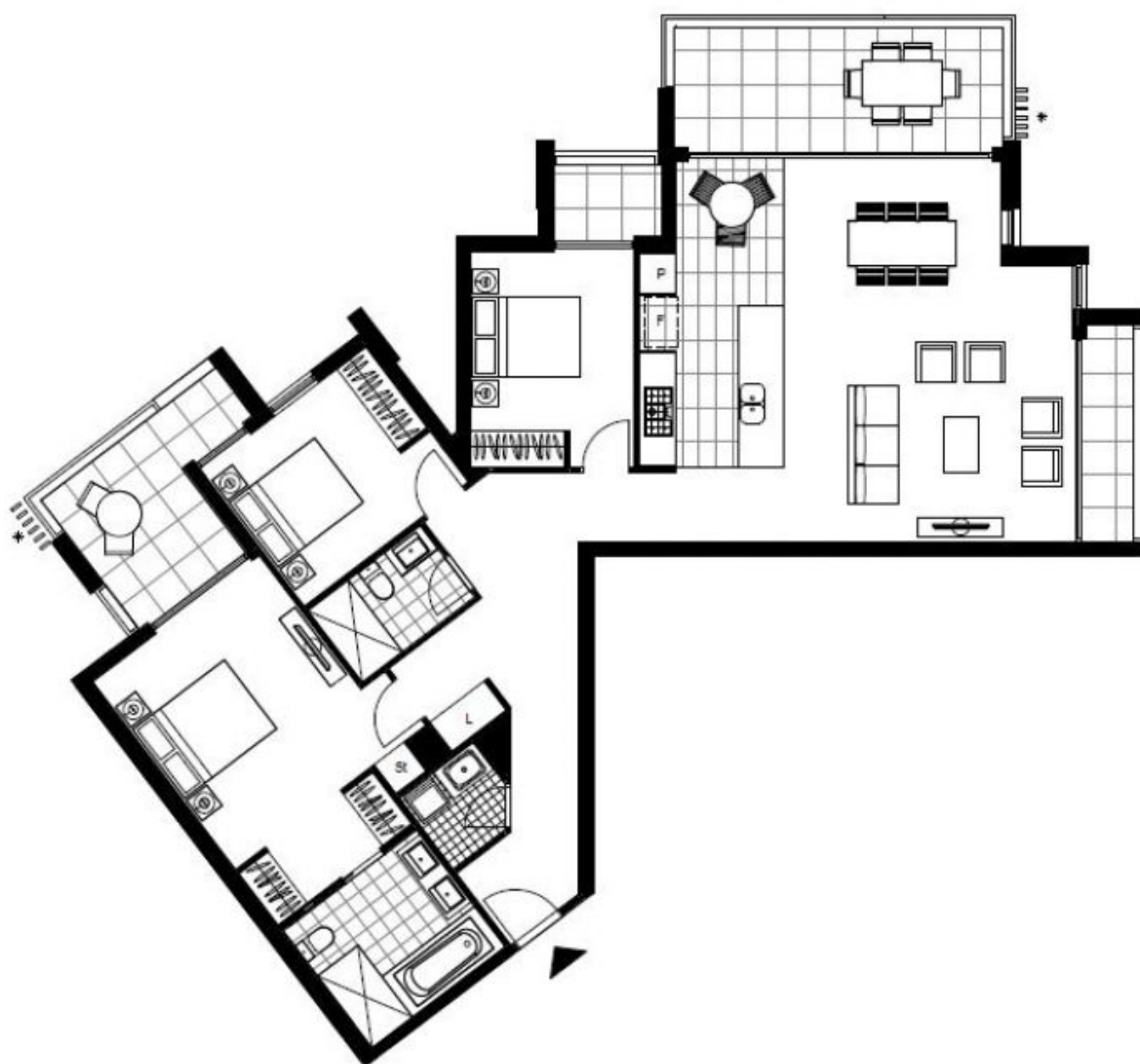
Contact: Naz Sabzpouri
02 8588 8888
0401 545 440

Type: Apartment

Date Available: 04/07/2020

Bond: \$4000

<https://www.resbymirvac.com>



LEVEL 4

Plans shown are only indicative of layout. Dimensions are approximate.

GLEBE, NSW
416/19 Minogue Crescent