



## GLEBE, NSW

313/159 Ross Street

**2**  
BED

**2**  
BATH

**1**  
CAR



### North-east Facing 2-Bedroom Apartment in Harold Park

- This 92sqm, Park facing 2-Bedroom Apartment offers;
- North-east Facing 2-Bedroom Apartment in Harold Park
  - Modern kitchen with stone benchtops and Miele appliances
  - Well-appointed bedrooms with built-in wardrobes
  - Sunny balcony accessible from the living area
  - Sleek bathroom with plenty of storage
  - Internal laundry with washer and dryer included
  - Secure basement car space included
  - Ducted A/C, video intercom and NBN connectivity
  - Walking distance to buses, the light rail and the Tramsheds

### DEPOSIT TAKEN

**Contact:** Matthew Matthews  
02 8588 8888  
0418 266 590  
Stuart Nohra  
02 8588 8888  
0432 206 000

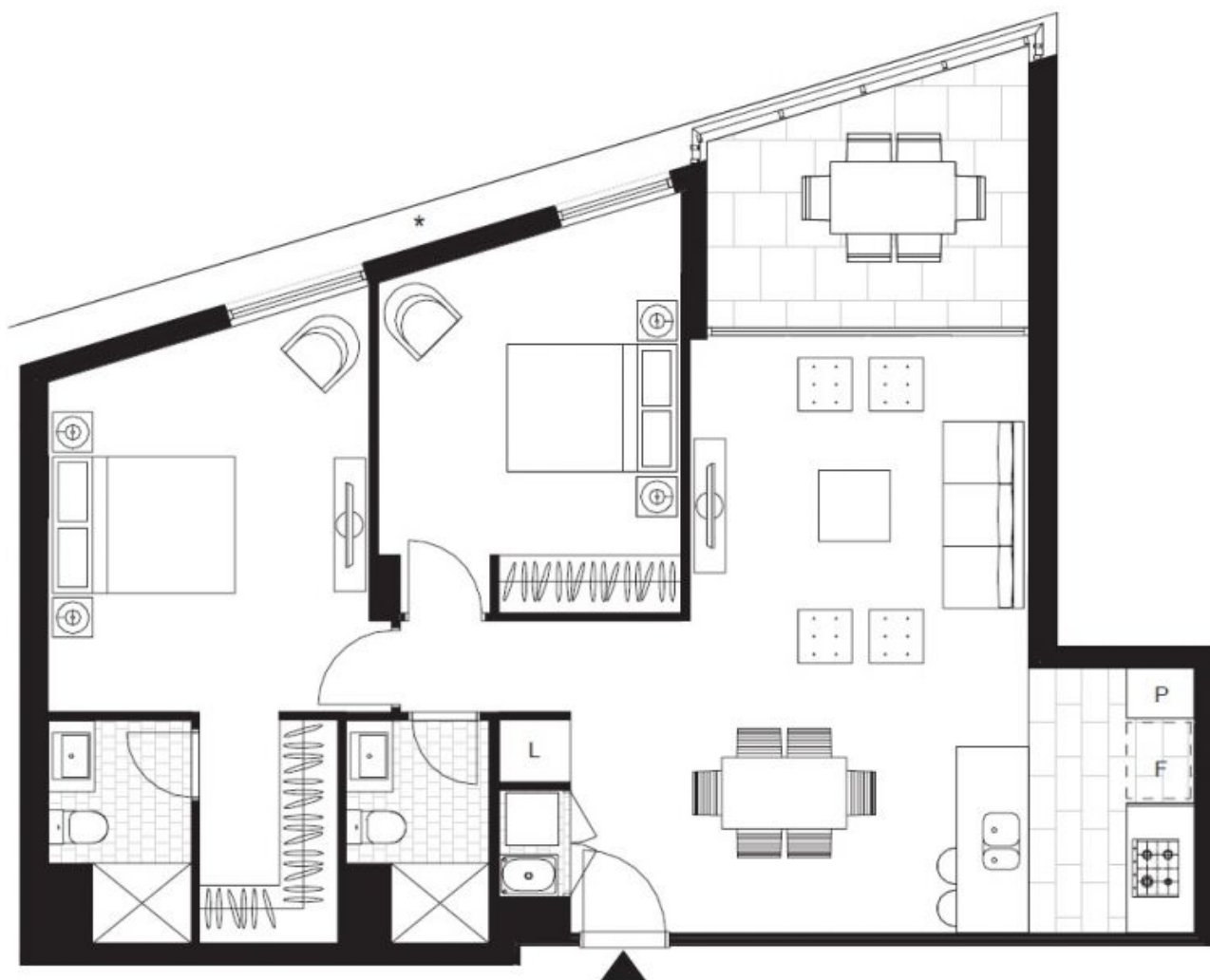
**Type:** Apartment

**Date Available:** 20/09/2018

**Bond:** \$3300

**<https://www.resbymirvac.com>**

For more information, please contact Real Estate Services by Mirvac on 02 8588 8888 or email [enquiries@resbymirvac.com](mailto:enquiries@resbymirvac.com) - Your Onsite Agent!



LEVEL 3

Plans shown are only indicative of layout. Dimensions are approximate.

**GLEBE, NSW**  
313/159 Ross Street