



## GLEBE, NSW

315/19 Minogue Crescent

**1**  
BED

**1**  
BATH



### Deposit Taken!

This 63sqm, 3rd floor Apartment features:  
 Stylish & Contemporary 1-Bedroom Apartment in Harold Park

- Large bedroom with floor to ceiling built in wardrobe
- Open-plan living and dining area flowing onto balcony
- Stone kitchen and integrated Miele appliances
- Modern bathroom with plenty of storage
- Internal laundry with washing machine and dryer included
- South facing balcony with leafy outlook
- Secure basement storage cage included
- Ducted A/C, video intercom and NBN connectivity
- 350m to the Tramsheds, light rail station and public transport

### Deposit Taken!

**Contact:** Naz Sabzpouri  
 02 8588 8888  
 0401 545 440

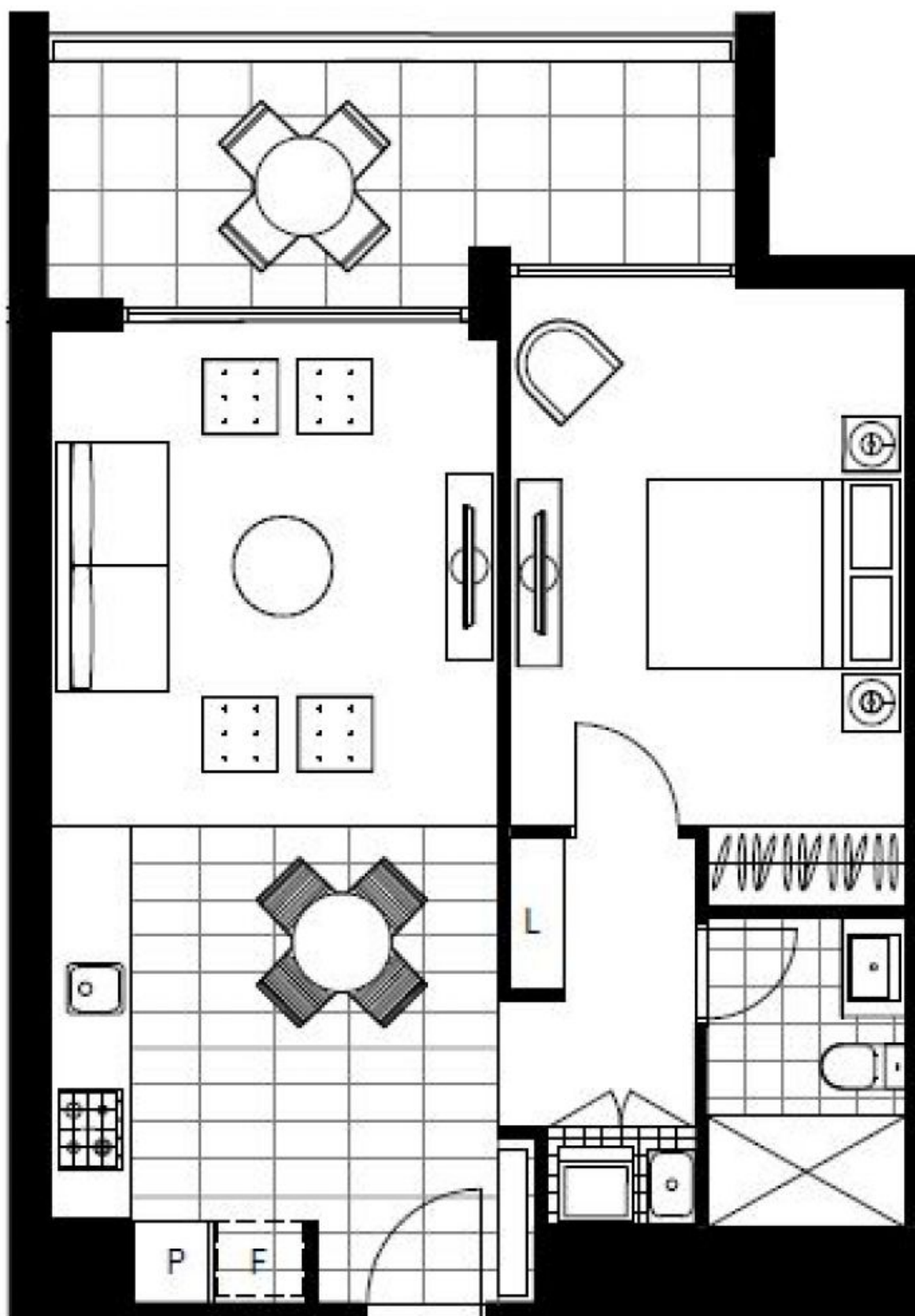
**Type:** Apartment

**Date Available:** 15/12/2020

**Bond:** \$1800

<https://www.resbymirvac.com>

Contact Real Estate Services by Mirvac on 8588 8888 to book a private inspection or visit our website [www.resbymirvac.com](http://www.resbymirvac.com) - Your Onsite Agent!



Plans shown are only indicative of layout. Dimensions are approximate.

**GLEBE, NSW**  
315/19 Minogue Crescent