



GLEBE, NSW

27 Scotsman Street

3
BED

2
BATH

2
CAR



Deposit Taken

This 240sqm, 3-Bedroom Terrace features:
Rare 3 Bedroom Terrace in Harold Park

- Large bedrooms with built-in wardrobes
- Master includes private balcony, walk-in robe and ensuite
- Tiled living and dining area, leading to the courtyard
- Sleek bathrooms with vanity storage, bath in ensuite
- Powder room off living space, great for entertaining
- Modern kitchen with stone benchtops and Miele appliances
- Courtyard at both front and rear of property
- Internal laundry with washer and dryer included
- Lock up garage with direct access to the terrace PLUS additional car space
- Ducted A/C, video intercom, security alarm and NBN connectivity

Deposit Taken

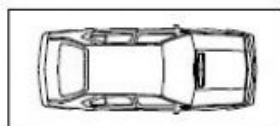
Contact: Matthew Matthews
02 8588 8888
0418 266 590
Stuart Nohra
02 8588 8888
0432 206 000

Type: Terrace

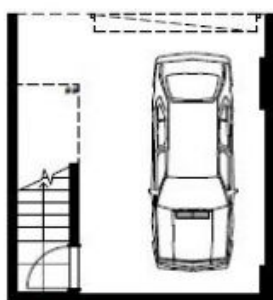
Date Available: 07/09/2019

Bond: \$5200

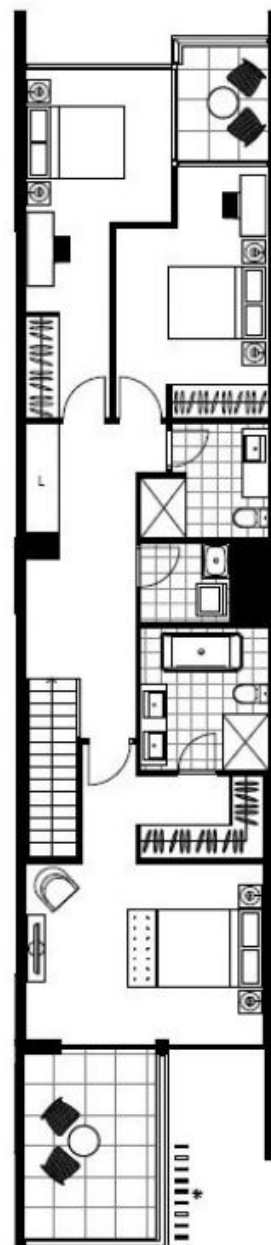
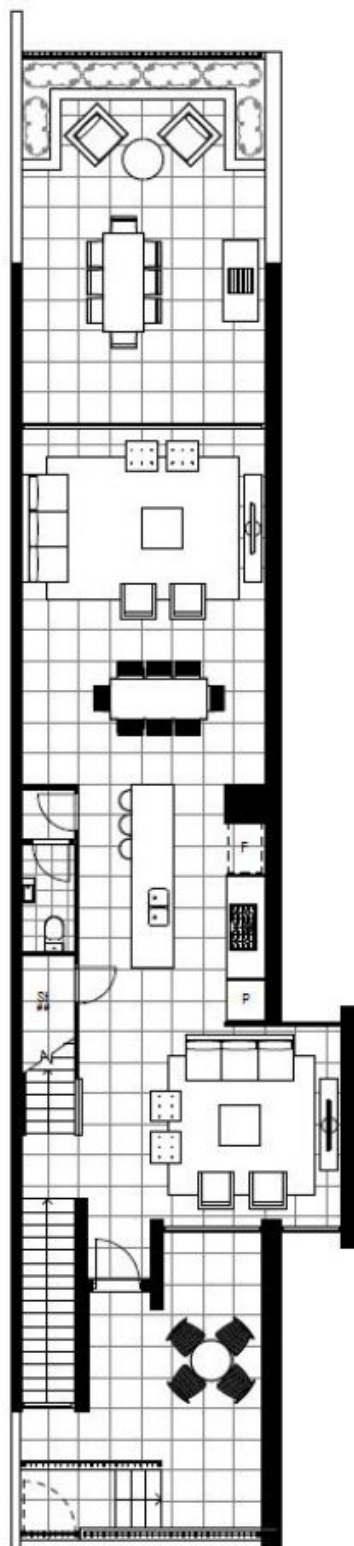
<https://www.resbymirvac.com>



Allocated car space



Lock up garage



Plans shown are only indicative of layout. Dimensions are approximate.

GLEBE, NSW
27 Scotsman Street