

GLEBE, NSW

408/147 Ross Street

1
BED

1
BATH



East Facing 1-Bedroom Apartment in Glebe

This 4th floor, Harold Park Apartment features:

- Spacious bedroom with generous built-in wardrobe
- Tiled living and dining area, leading to the balcony
- Stylish galley kitchen with stone benchtop and Miele appliances
- Modern bathroom with plenty of storage
- East-facing balcony, allowing loads of natural light
- Internal laundry with washing machine and dryer included
- Secure storage cage included
- Ducted A/C, video intercom and NBN connectivity
- 450m to the Heritage-listed Tramsheds, light rail and public transport

\$495 per week

Contact: Naz Sabzpouri
02 8588 8888
0401 545 440

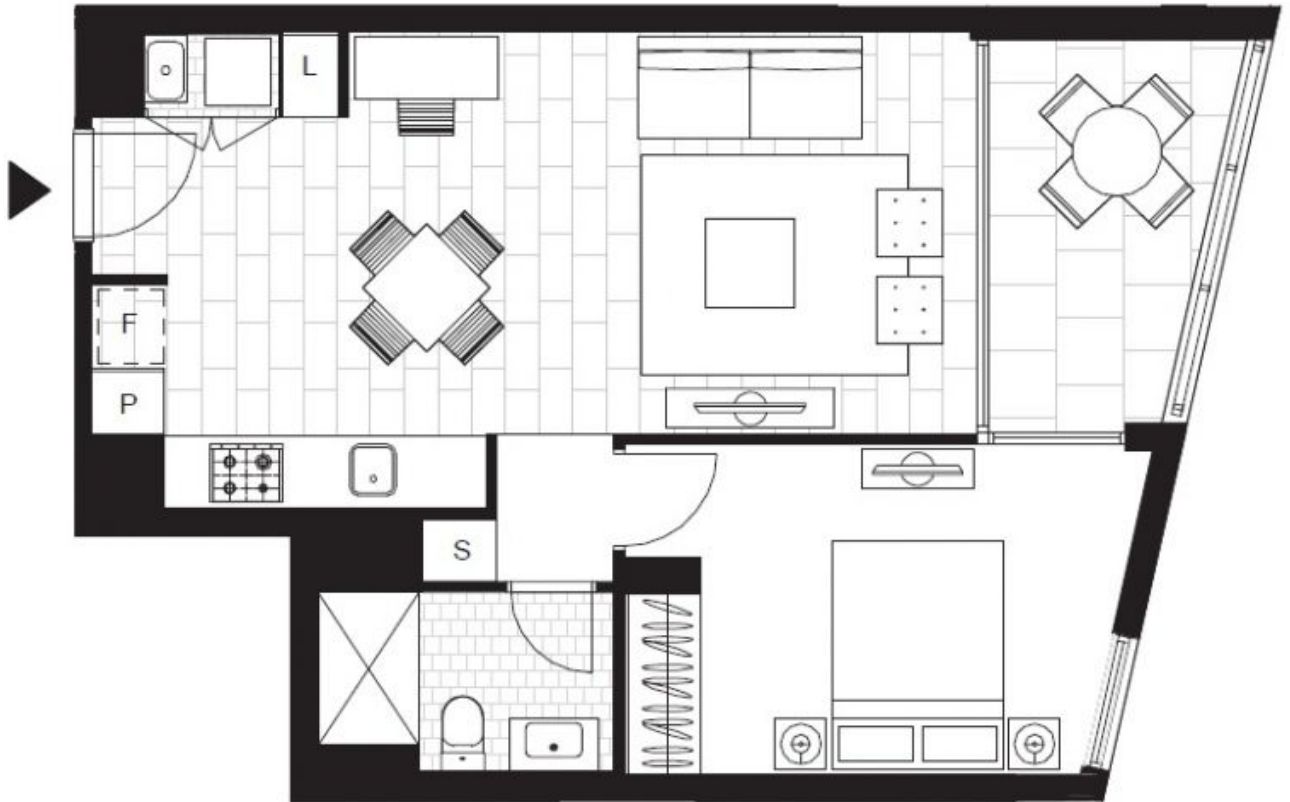
Type: Apartment

Date Available: 28/08/2020

Bond: \$2000

<https://www.resbymirvac.com>

For more information please contact Real Estate Services by Mirvac on 02 8588 8888 or email enquiries@resbymirvac.com - Your Onsite Agent!



Plans shown are only indicative of layout. Dimensions are approximate.

GLEBE, NSW
408/147 Ross Street