

DEPOSIT TAKEN

# More apartments available for lease in Harold Park!

Please call 0401 545 440 or email [harry.kinezos@resbymirvac.com](mailto:harry.kinezos@resbymirvac.com) for more information

[www.resbymirvac.com](http://www.resbymirvac.com)

**HAROLD PARK**  
GLEBE'S SECRET BACKYARD

**mirvac**



## GLEBE, NSW 401/147 Ross Street

**1**  
BED

**1**  
BATH



### Light-Filled 1-Bedroom Apartment in Harold Park, Glebe

This 57qm, Harold Park Apartment features:

- Large bedroom with generous built-in wardrobe
- Tiled dining and kitchen area, flowing into living area
- Sleek kitchen with stone benchtop and Miele appliances
- Modern bathroom with plenty of vanity storage
- Sunny balcony, with access from living and bedroom
- Internal laundry with washing machine and dryer included
- Secure basement storage cage included
- Ducted A/C, video intercom and NBN connectivity
- 450m to the Heritage-listed Tramsheds, light rail and public transport

### For more apartments call 0401 545 440!

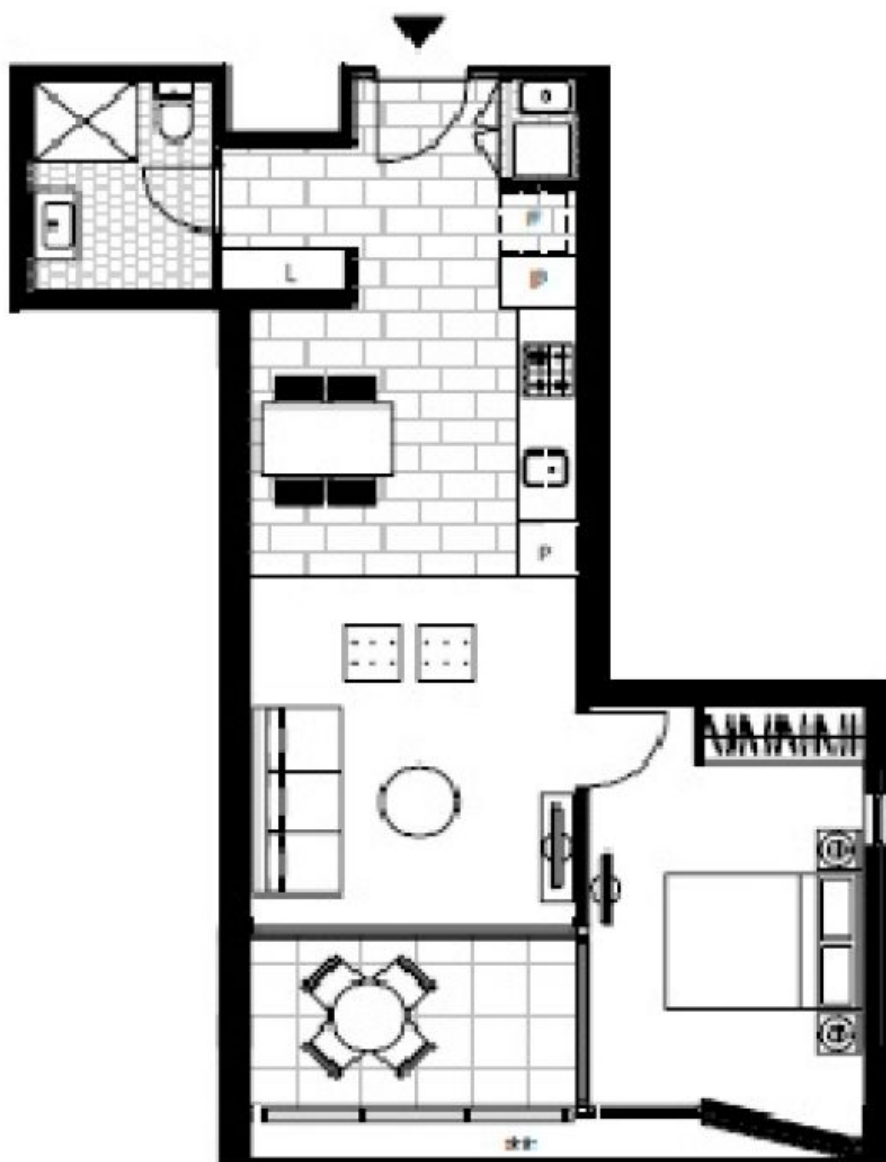
**Contact:** Naz Sabzpouri  
02 8588 8888  
0401 545 440

**Type:** Apartment

**Date Available:** 11/08/2020

**Bond:** \$2040

<https://www.resbymirvac.com>



Plans shown are only indicative of layout. Dimensions are approximate.

**GLEBE, NSW**  
401/147 Ross Street