



GLEBE, NSW

609/147 Ross Street

1
BED

1
BATH



Less than 200m to Harold Park Tramsheds

Sixth floor 60sqm apartment in Harold Park

- Large open plan living and dining
- Tiled throughout with carpeted bedroom
- Modern kitchen with Miele appliances
- Balcony off living area, west orientation
- Master bedrooms with built ins
- Internal washer and dryer included
- Secure storage cage in basement
- NBN accessibility & Split cycle air-con
- Easy access to transport and the Tram sheds

\$520 per week

Contact: Naz Sabzpouri
02 8588 8888
0401 545 440

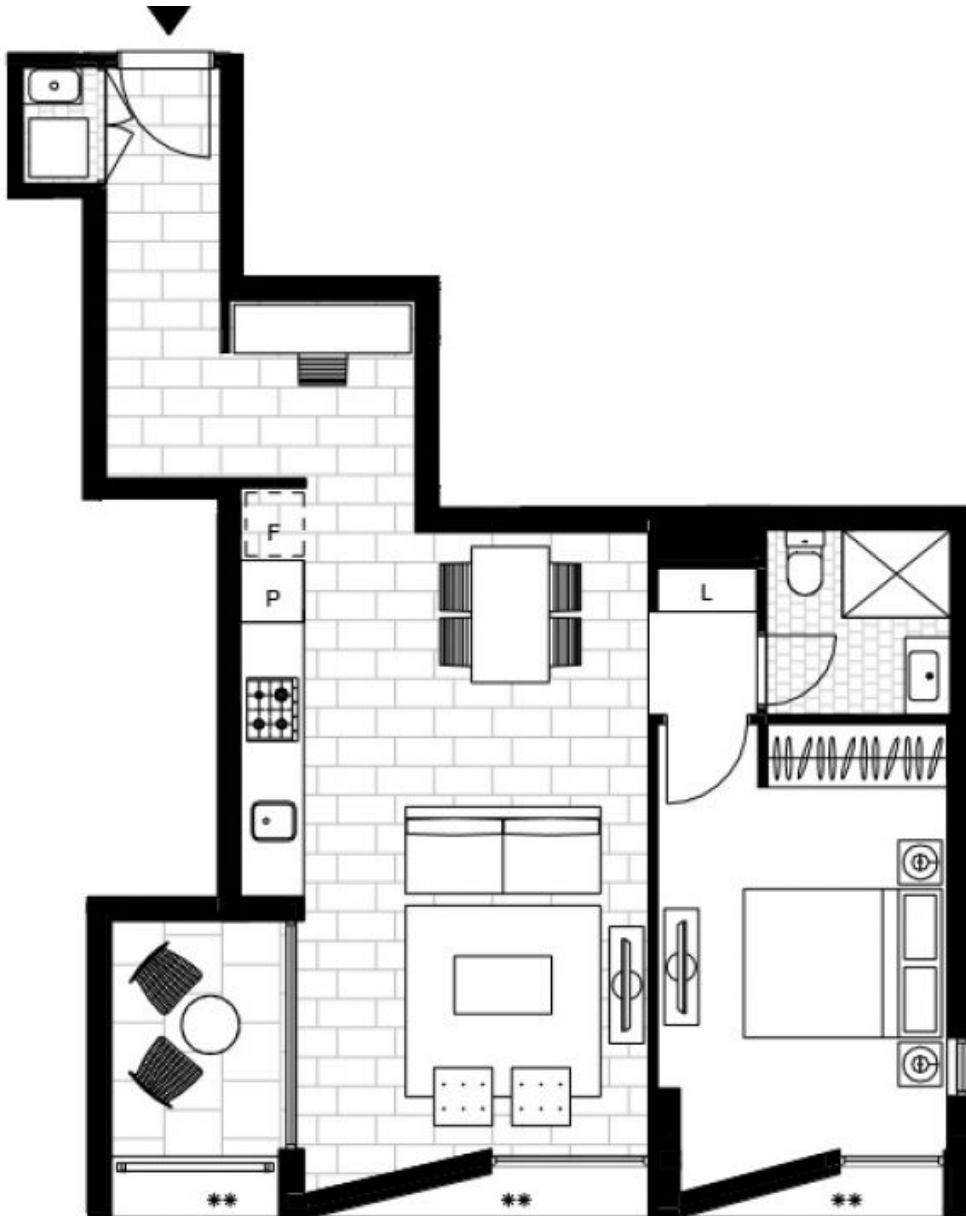
Type: Apartment

Date Available: 24/06/2020

Bond: \$2080

<https://www.resbymirvac.com>

Photos are indicative only



Plans shown are only indicative of layout. Dimensions are approximate.

GLEBE, NSW
609/147 Ross Street