



## GLEBE, NSW

609/147 Ross Street

**1**  
BED

**1**  
BATH



### Less than 200m to Harold Park Tramsheds

Sixth floor 60sqm apartment in Harold Park

- Large open plan living and dining
- Tiled throughout with carpeted bedroom
- Modern kitchen with Miele appliances
- Balcony off living area, west orientation
- Master bedrooms with built ins
- Internal washer and dryer included
- Secure storage cage in basement
- NBN accessibility & Split cycle air-con
- Easy access to transport and the Tram sheds

### \$520 per week

**Contact:** Naz Sabzpouri  
02 8588 8888  
0401 545 440

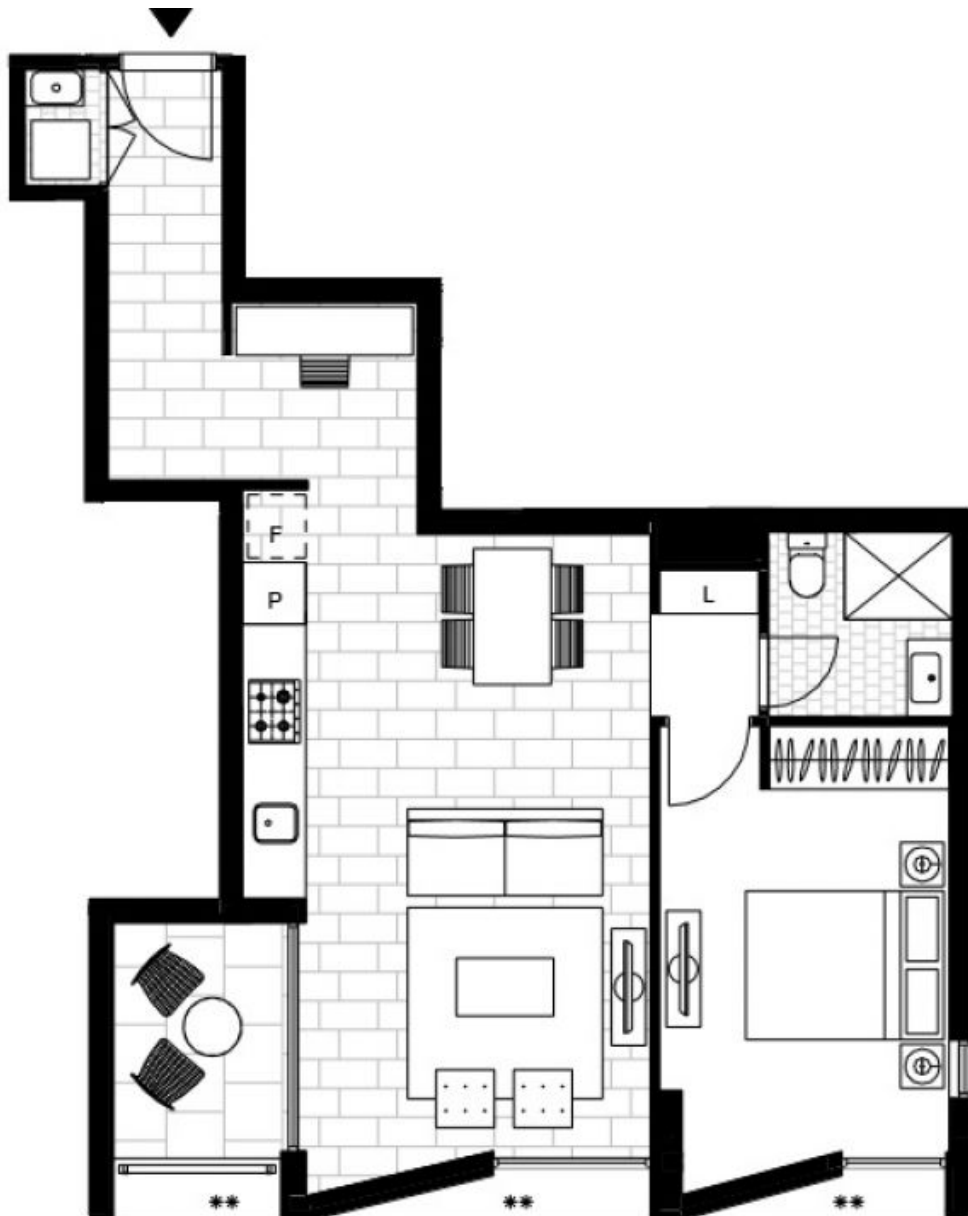
**Type:** Apartment

**Date Available:** 24/06/2020

**Bond:** \$2080

<https://www.resbymirvac.com>

**\*\*Photos are indicative only\*\***



Plans shown are only indicative of layout. Dimensions are approximate.

**GLEBE, NSW**  
609/147 Ross Street