



GLEBE, NSW
3309/21 Scotsman

2 BED **2** BATH **1** CAR

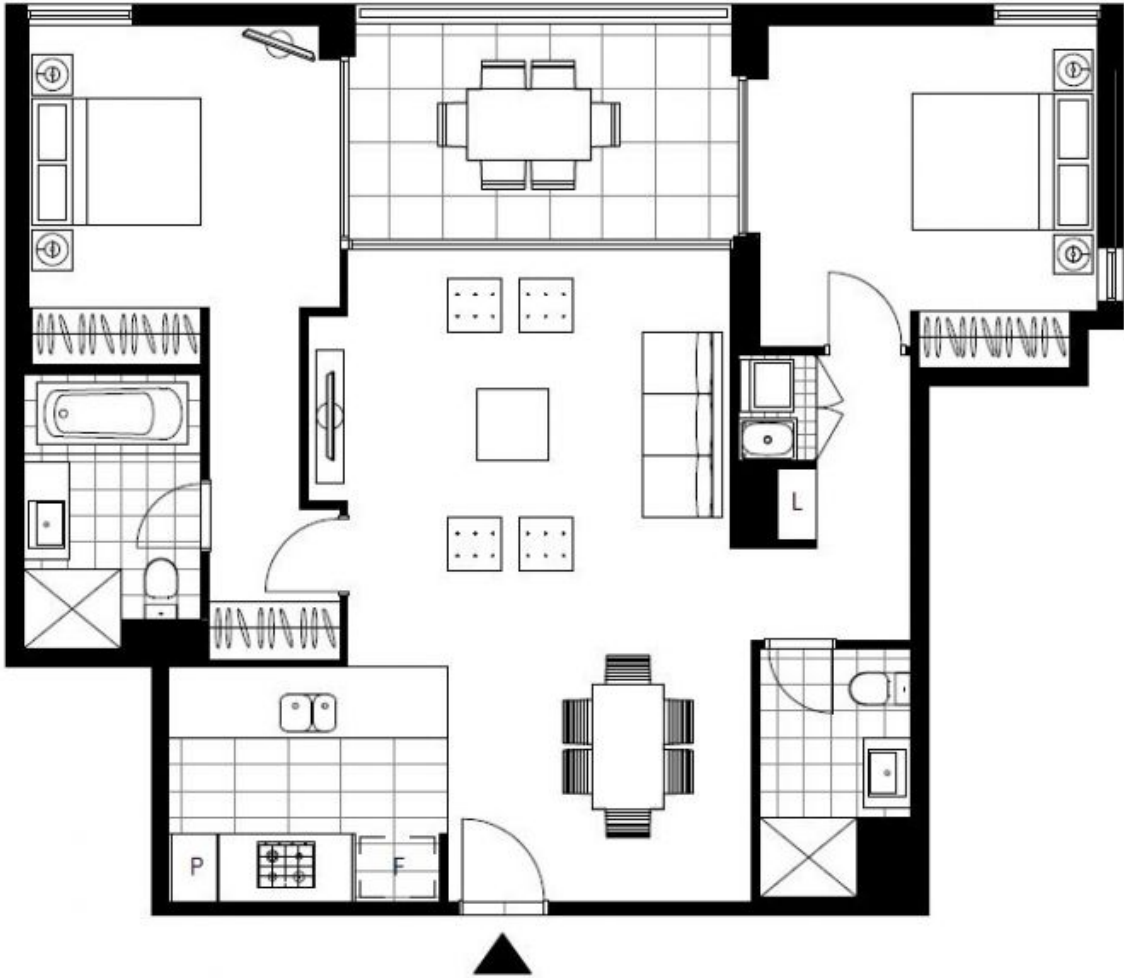


Fully Furnished 2 bedroom apartment in Harold Park
This brand new, premium-quality 99 sqm two-bedroom apartment is located in Harold Park's newest luxury landmark development, Maestro' at Forest Lodge. It is a short walk from the light rail station and short drive to Sydney CBD.

Features;

- High ceilings, north-facing windows
- Electronic security access
- Open entertaining with distinct lounge and dining spaces
- Modern kitchen with Caesarstone benches, gas appliances
- Covered balcony with triple door access
- Two double bedrooms, built-in wardrobes, master with ensuite

LEASED
Contact: Naz Sabzpouri
02 8588 8888
0401 545 440
Type: Apartment
Date Available: 13/06/2016
Bond: \$3200
<https://www.resbymirvac.com>



Plans shown are only indicative of layout. Dimensions are approximate.

GLEBE, NSW
3309/21 Scotsman