



**GLEBE, NSW**  
7310/2 Cullen Close

**2** BED **2** BATH **1** CAR



**LARGE 2 BEDROOM APARTMENT LOCATED IN HAROLD PARK**

This brand new 105sqm two bedroom apartment includes;

- Double bedrooms, generous size built in robes
- Ceaser stone bench top in open plan kitchen
- Miele Appliances and ample storage space
- Internal laundry with dryer and washer
- Secure car space and a secure storage cage
- Close proximity to buses and the Light Rail

\*\*\*\*Photos are not of exact apartment\*\*\*\*

Please contact our office to organize an inspection 8588 8888

**800**

**Contact:**

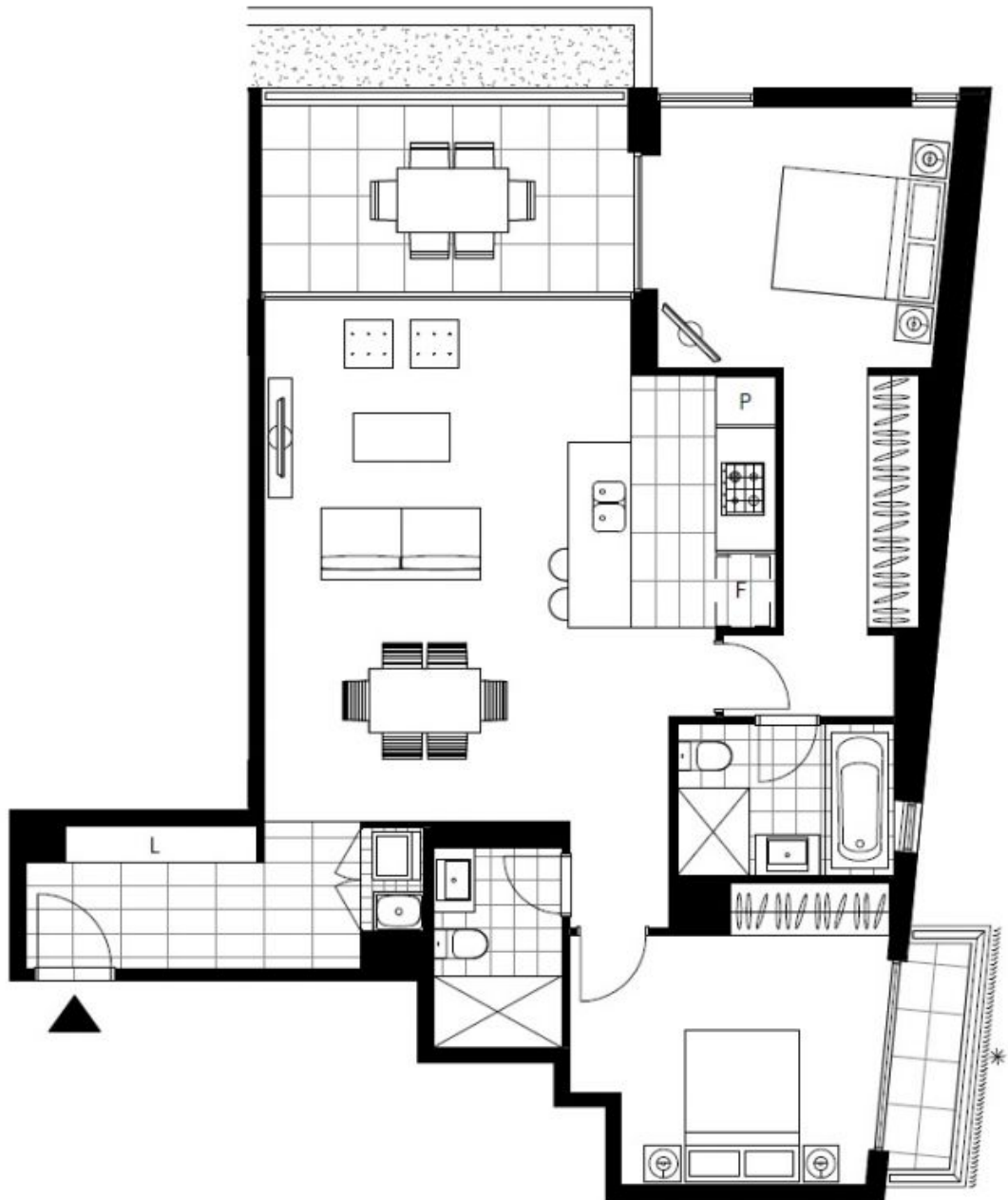
Naz Sabzpouri  
02 8588 8888  
0401 545 440

**Type:** Apartment

**Date Available:** 22/04/2016

**Bond:** \$3200

<https://www.resbymirvac.com>



Plans shown are only indicative of layout. Dimensions are approximate.

**GLEBE, NSW**  
7310/2 Cullen Close