

## GLEBE, NSW

601/95 Ross Street

**1**  
BED

**1**  
BATH



**Deposit taken- More apartments available- Call Harry 0401 545 440**

This 55sqm, 6th floor apartment features:

- Well-appointed bedroom with generous built-in wardrobes
- Sliding partition doors for privacy included
- Open-plan living and dining area, with access to balcony
- Sleek kitchen with stone benchtop and built-in Miele appliances
- Functional bathroom with plenty of generous storage
- Internal laundry with washing machine and dryer included
- Secure storage cage included
- Ducted A/C, video intercom and NBN connectivity
- 450m to the Heritage-listed Tramsheds, light rail and public transport

**DEPOSIT TAKEN !**

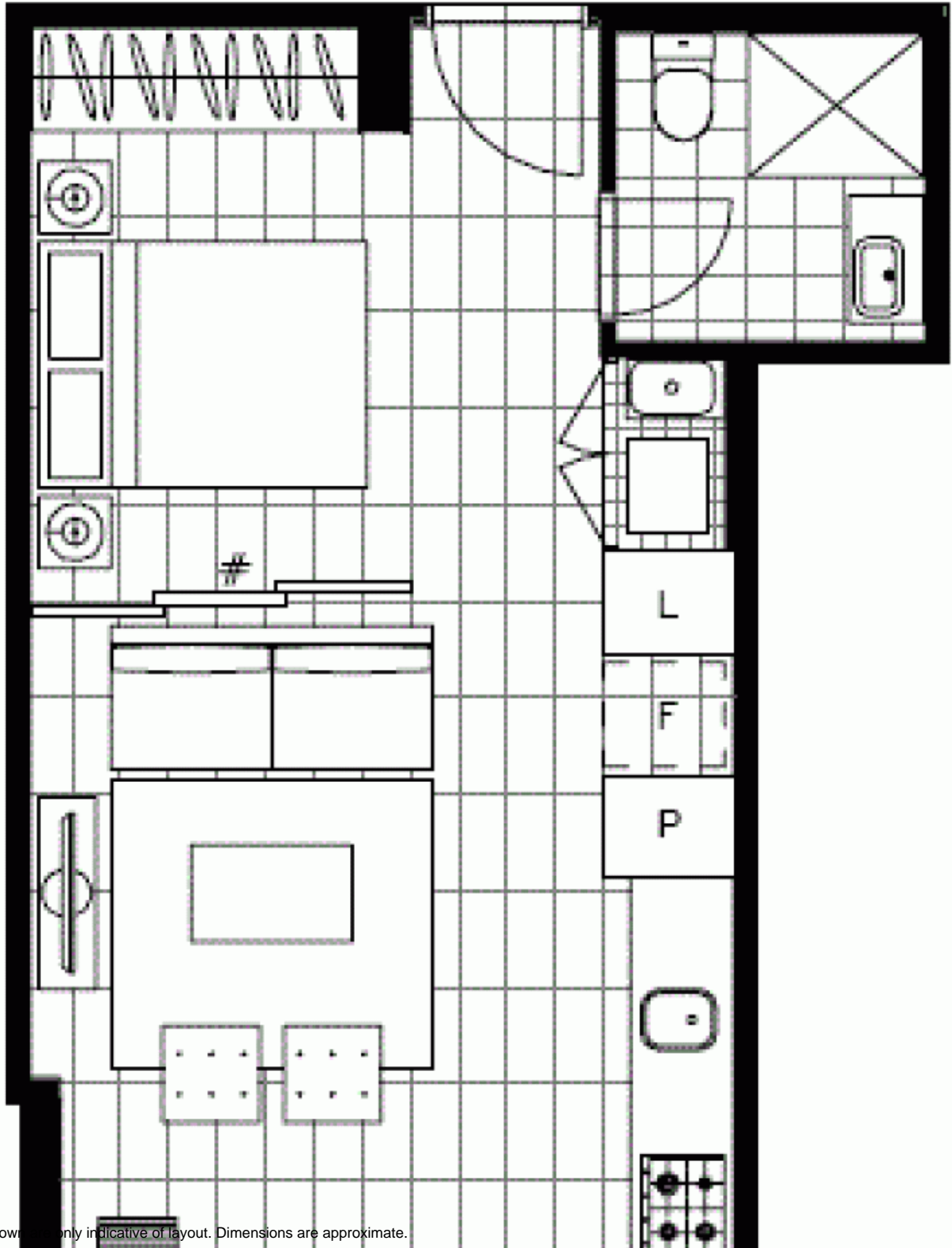
**Contact:** Naz Sabzpouri  
02 8588 8888  
0401 545 440

**Type:** Apartment

**Date Available:** 20/03/2021

**Bond:** \$1680

<https://www.resbymirvac.com>



Plans shown are only indicative of layout. Dimensions are approximate.

**GLEBE, NSW**  
601/95 Ross Street