

GLEBE, NSW
5806/148 Ross Street

1 **1** **1** 
BED BATH CAR

Deposit Taken!

- This 53sqm, 8th floor 1-Bedroom Apartment features:
- 1-Bedroom with Parking Apartment in Harold Park
 - Large bedroom with floor to ceiling built-in wardrobe
 - Tiled, open-plan living and dining area
 - Modern kitchen with stone benchtop and Miele appliances
 - Sleek bathrooms with plenty of vanity storage
 - South-east facing balcony
 - Internal laundry with washing machine and dryer included
 - Secure car space and storage cage included
 - Ducted Air conditioning, video intercom and NBN connectivity
 - 300m to the Tramsheds, light rail station and public transport

Deposit Taken

Contact: Matthew Matthews
02 8588 8888
0418 266 590

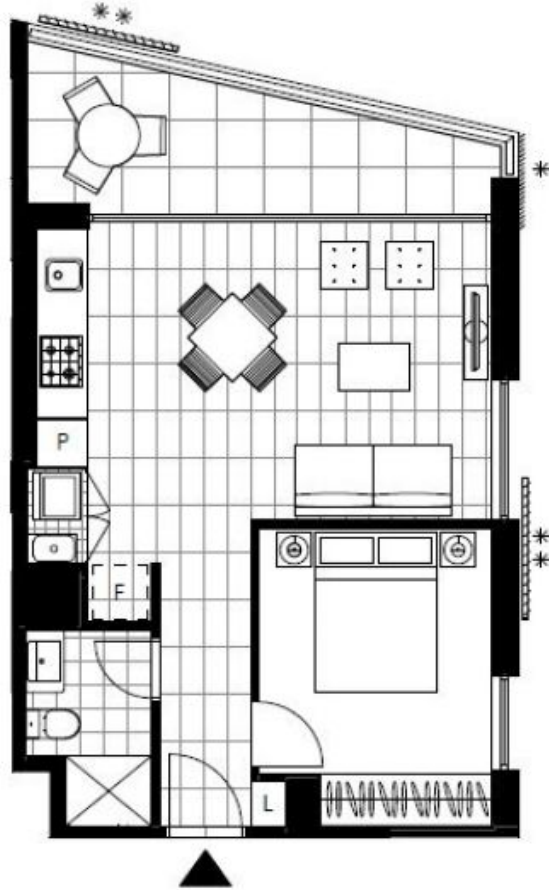
Type: Apartment

Date Available: 14/03/2020

Bond: \$2540

<https://www.resbymirvac.com>

For more information, please contact Real Estate Services by Mirvac on 02 8588 8888 or email enquiries@resbymirvac.com - Your Onsite Agent!



LEVEL 8

Plans shown are only indicative of layout. Dimensions are approximate.

GLEBE, NSW
5806/148 Ross Street