



GLEBE, NSW
6606/162 Ross Street

2 **2** **1** **RES**
BED BATH CAR

Deposit Taken!

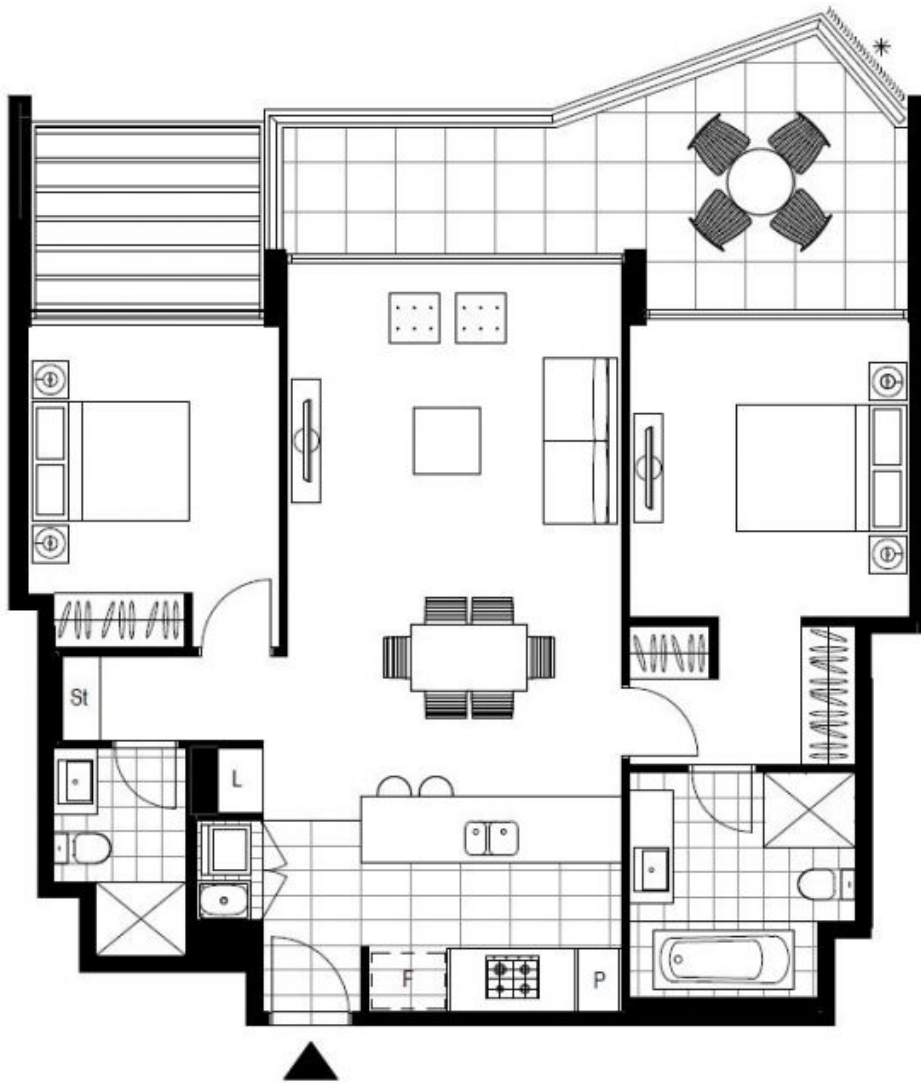
This 99sqm, 6th floor Apartment features:
Split Bedroom Apartment in the Heart of Glebe

- North-East Facing 2-Bedroom Apartment in Harold Park
- Spacious bedrooms with built-in wardrobes
- Open-plan living and dining area, leading to the balcony
- Stylish kitchen with stone benchtops and Miele appliances
- Sleek bathrooms with generous vanity storage, bath in ensuite
- Sunny balcony, perfect for entertaining
- Internal laundry with washing machine and dryer included
- Separate study nook, perfect for a home office
- Secure car space and storage cage included
- Ducted A/C, video intercom and NBN connectivity

Deposit Taken

Contact: Matthew Matthews
02 8588 8888
0418 266 590

Type: Apartment
Date Available: 11/05/2020
Bond: \$2840
<https://www.resbymirvac.com>



Plans shown are only indicative of layout. Dimensions are approximate.

GLEBE, NSW
6606/162 Ross Street