



## GLEBE, NSW

6606/162 Ross Street

2  
BED

2  
BATH

1  
CAR



### Deposit Taken!

This 99sqm, 6th floor Apartment features:  
Split Bedroom Apartment in the Heart of Glebe

- North-East Facing 2-Bedroom Apartment in Harold Park
- Spacious bedrooms with built-in wardrobes
- Open-plan living and dining area, leading to the balcony
- Stylish kitchen with stone benchtops and Miele appliances
- Sleek bathrooms with generous vanity storage, bath in ensuite
- Sunny balcony, perfect for entertaining
- Internal laundry with washing machine and dryer included
- Separate study nook, perfect for a home office
- Secure car space and storage cage included
- Ducted A/C, video intercom and NBN connectivity

### Deposit Taken

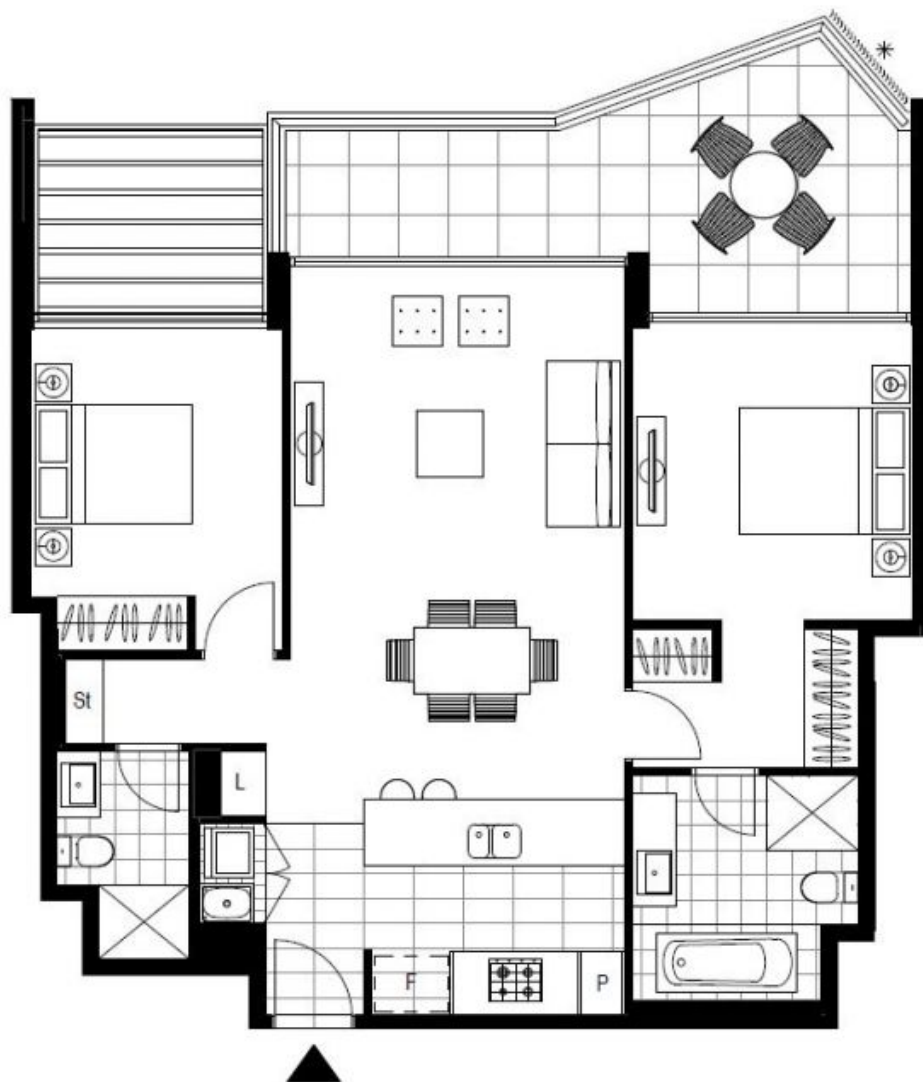
**Contact:** Matthew Matthews  
02 8588 8888  
0418 266 590

**Type:** Apartment

**Date Available:** 11/05/2020

**Bond:** \$2840

<https://www.resbymirvac.com>



Plans shown are only indicative of layout. Dimensions are approximate.

**GLEBE, NSW**  
6606/162 Ross Street