



**GLEBE, NSW**  
413/131 Ross Street

**1** BED **1** BATH



**Park facing 1-Bedroom Apartment in Harold Park**

This 67sqm, 4th floor Apartment features:

- Large bedroom with generous built-in wardrobe
- Open-plan living and dining area
- Contemporary kitchen with stone benchtop and Miele appliances
- Sleek bathroom with vanity storage
- North West-facing balcony, overlooking the park
- Internal laundry with washer and dryer included
- Study nook, perfect for a home office
- Secure storage cage included
- Ducted A/C, video intercom and NBN connectivity
- 270m to the Heritage-listed Tramsheds, light rail station and public transport

**\$575 per week | Large Study Area!**

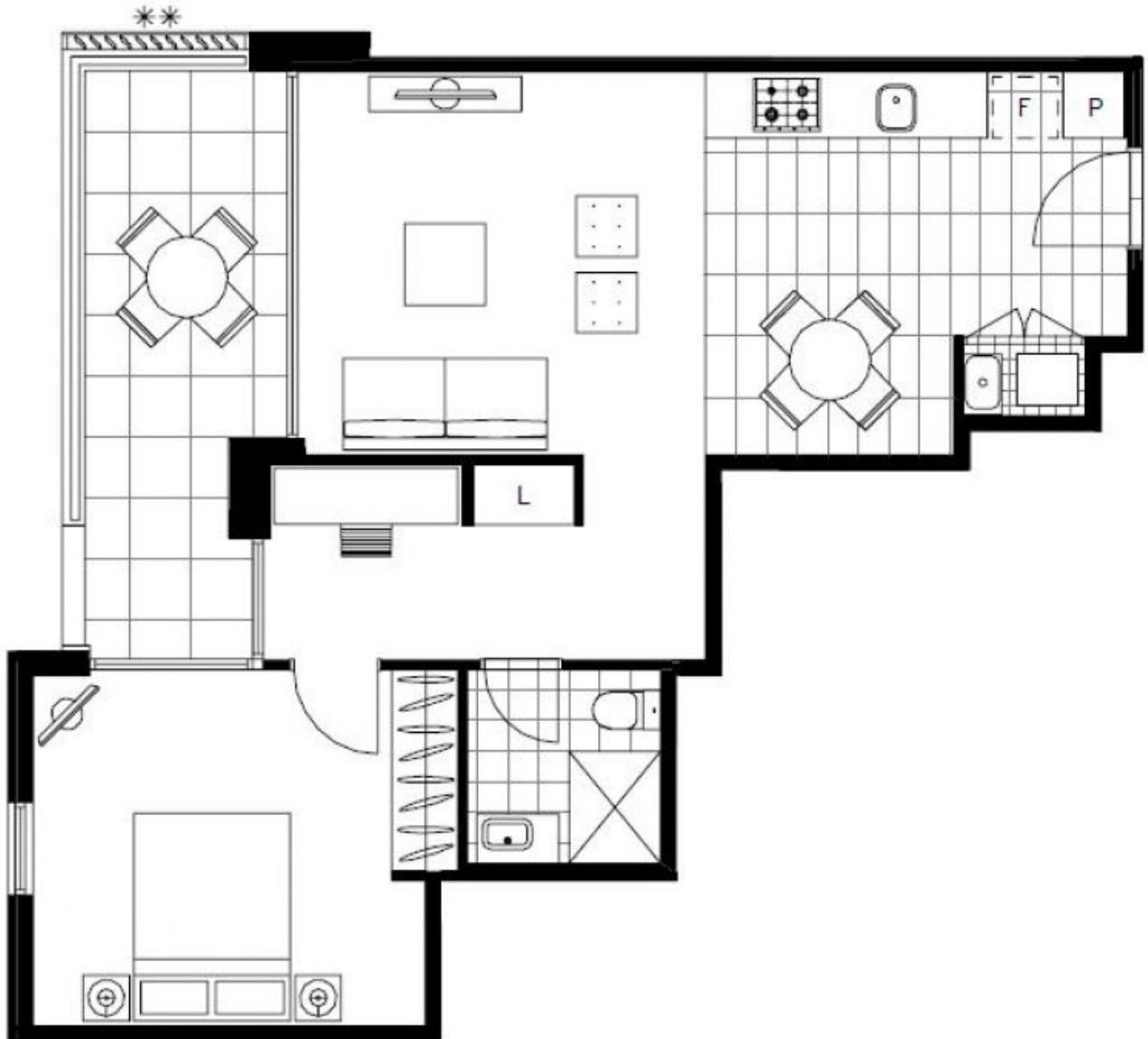
**Contact:** Naz Sabzpouri  
02 8588 8888  
0401 545 440

**Type:** Apartment

**Date Available:** 20/02/2021

**Bond:** \$2200

<https://www.resbymirvac.com>



Plans shown are only indicative of layout. Dimensions are approximate.

**GLEBE, NSW**  
413/131 Ross Street