



## GLEBE, NSW

3605/21 Scotsman Street

**1**  
BED

**1**  
BATH



### Deposit Taken!

- This 62sqm, 3rd floor Apartment has to offer:  
Spacious 1-Bedroom Apartment in Harold Park
- Large bedroom with floor to ceiling built-in wardrobe
  - East-facing balcony with fixed louvers
  - Stone benchtops and Miele appliances in kitchen
  - Modern bathroom with vanity storage
  - Open plan living and dining area
  - Internal laundry with washer and dryer included
  - Secure basement storage cage included
  - Ducted A/C, video intercom and NBN connectivity
  - 500m walk to buses, the light rail and the Tramsheds

\*\*images indicative only\*\*

### Deposit Taken

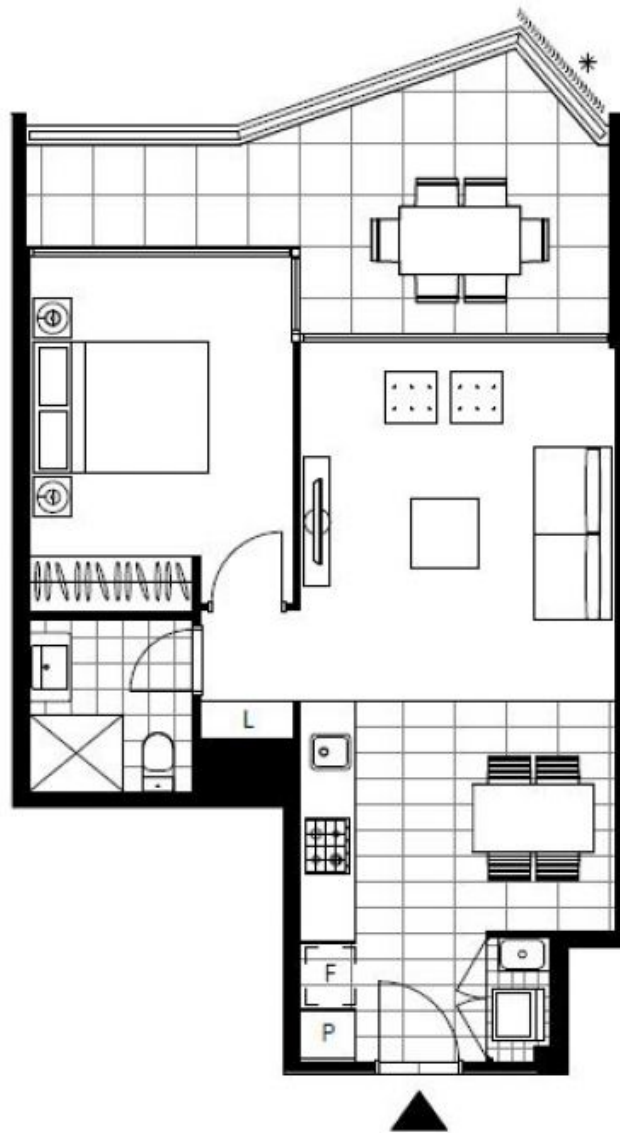
**Contact:** Matthew Matthews  
02 8588 8888  
0418 266 590

**Type:** Apartment

**Date Available:** 05/12/2018

**Bond:** \$2320

<https://www.resbymirvac.com>



LEVEL 4, 5, 6

Plans shown are only indicative of layout. Dimensions are approximate.

**GLEBE, NSW**  
3605/21 Scotsman Street