



GLEBE, NSW

2705/7 Scotsman Street



DEPOSIT TAKEN

Over sized 1-Bedroom With Study Apartment in Harold Park
This apartment on level 7 has to offer:

- Open-plan living and dining area
- Tiled throughout
- Study room with built ins
- Large bedroom with built-in wardrobe
- Modern kitchen with stone bench tops and Miele appliances
- Extra large balcony
- Internal washing machine & dryer included
- Secure car space with basement storage cage
- Sorry, pets not permitted
- Walking distance to buses, the light rail and the Tramsheds

DEPOSIT TAKEN

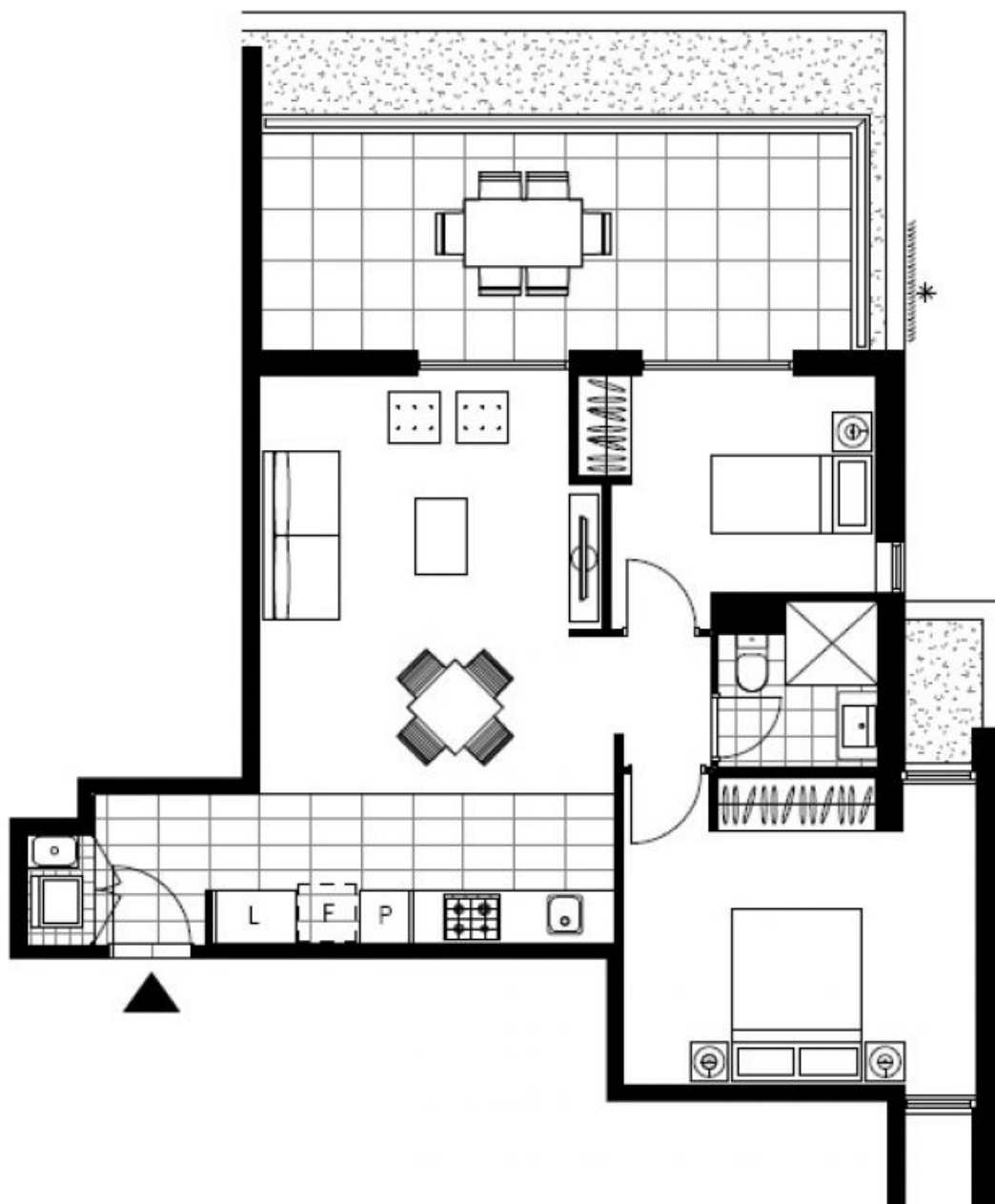
Contact: Naz Sabzpouri
02 8588 8888
0401 545 440

Type: Apartment

Date Available: 17/03/2018

Bond: \$3000

<https://www.resbymirvac.com>



LEVEL 7

Plans shown are only indicative of layout. Dimensions are approximate.

GLEBE, NSW
2705/7 Scotsman Street