



GLEBE, NSW

409/119 Ross Street

1
BED

1
BATH



Tiled, 60sqm 1 Bedroom Apartment *** Open Home Sat 05/03 @ 10.00 - 10.20am ***

*** Open Home Sat 05/03 @ 10.00 - 10.20am ***

This low maintenance apartment features;

- + Tiles living throughout, galley style kitchen
- + White goods included (except fridge)
- + Only 2.5km from Sydney CBD,
- + Developed by Mirvac, complete with the signature quality fixtures and finishes the brand is known for
- + Open walkways to the Harbour Foreshore, Blackwattle Bay and beyond
- + Minutes to the light rail station, Harold Park is well connected to Darling Harbour, Paddy's Markets, Chinatown and Central Station.

520

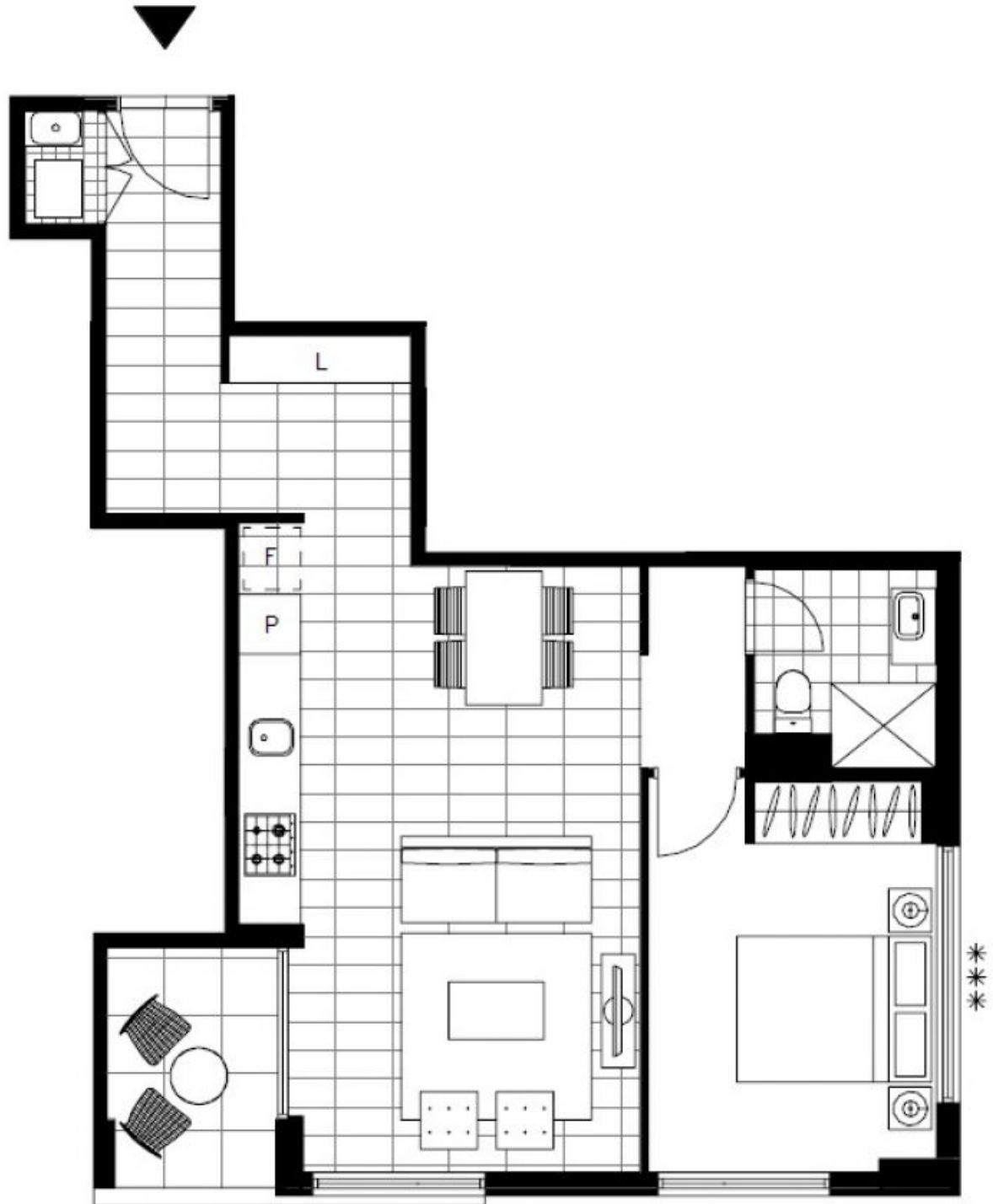
Contact: Naz Sabzpouri
02 8588 8888
0401 545 440

Type: Apartment

Date Available: 18/02/2016

Bond: \$2080

<https://www.resbymirvac.com>



Plans shown are only indicative of layout. Dimensions are approximate.

GLEBE, NSW
409/119 Ross Street