



## GLEBE, NSW

1312/1 Scotsman Street

**1**  
BED

**1**  
BATH



### Large 1 bedroom apartment PLUS study located in Harold Park

This apartment offers

- Private balcony and pleasant outlook
- Brand new blinds throughout
- Bright kitchen with Caesar bench tops and Miele appliances
- Main bedroom with built-ins
- Separate study
- Open plan living areas
- Internal laundry with dryer and washing machine INCLUDED
- Within moments walk to public transport, shops, & cafes
- Secure basement storage cage included

**580**

**Contact:**

Matthew Matthews

02 8588 8888

0418 266 590

**Type:**

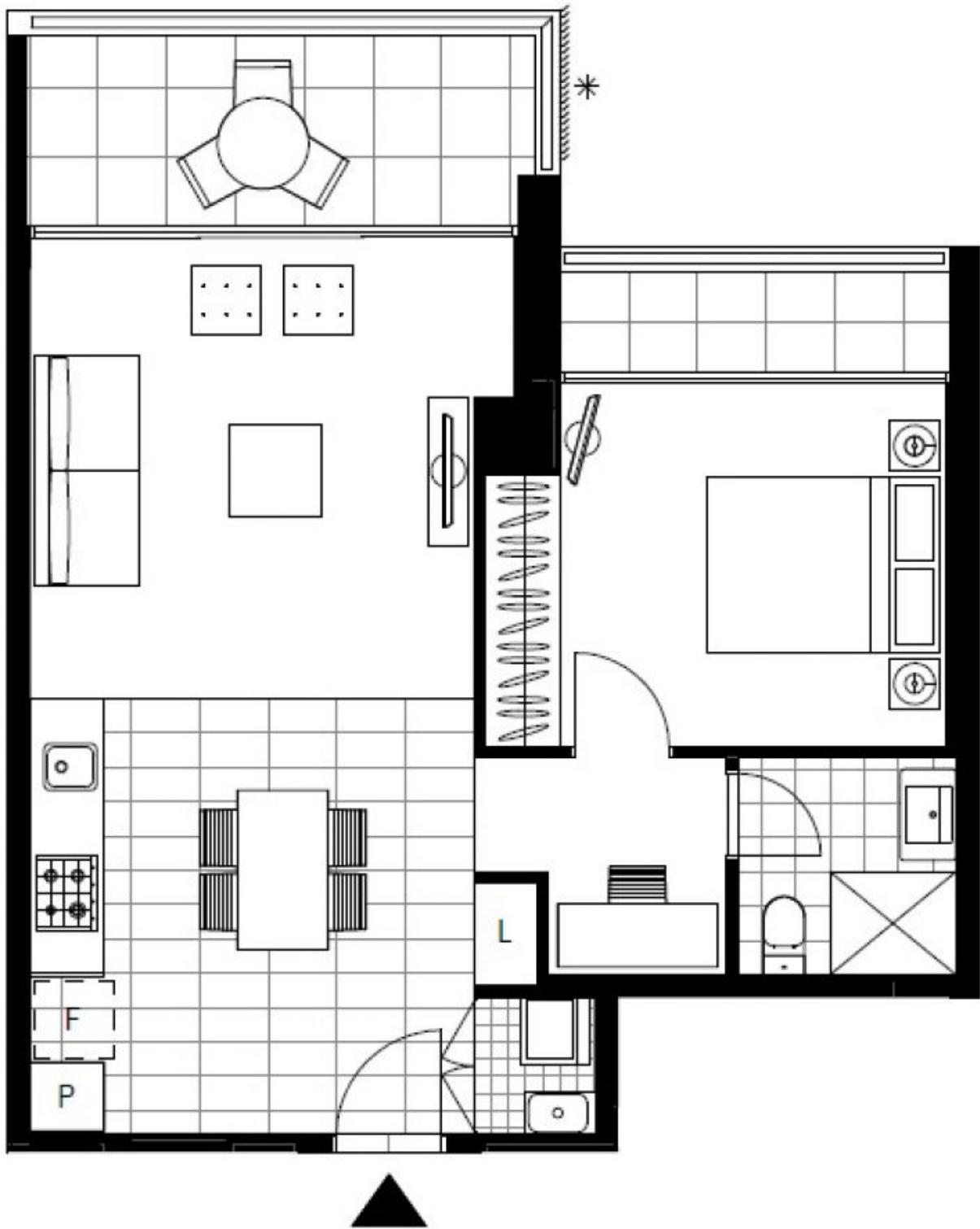
Apartment

**Date Available:** 28/01/2016

**Bond:**

\$2320

<https://www.resbymirvac.com>



LEVEL 3, 4, 5

Plans shown are only indicative of layout. Dimensions are approximate.

**GLEBE, NSW**  
1312/1 Scotsman Street