

GLEBE, NSW
1302/1 Scotsman Street

2 BED **2** BATH **1** CAR



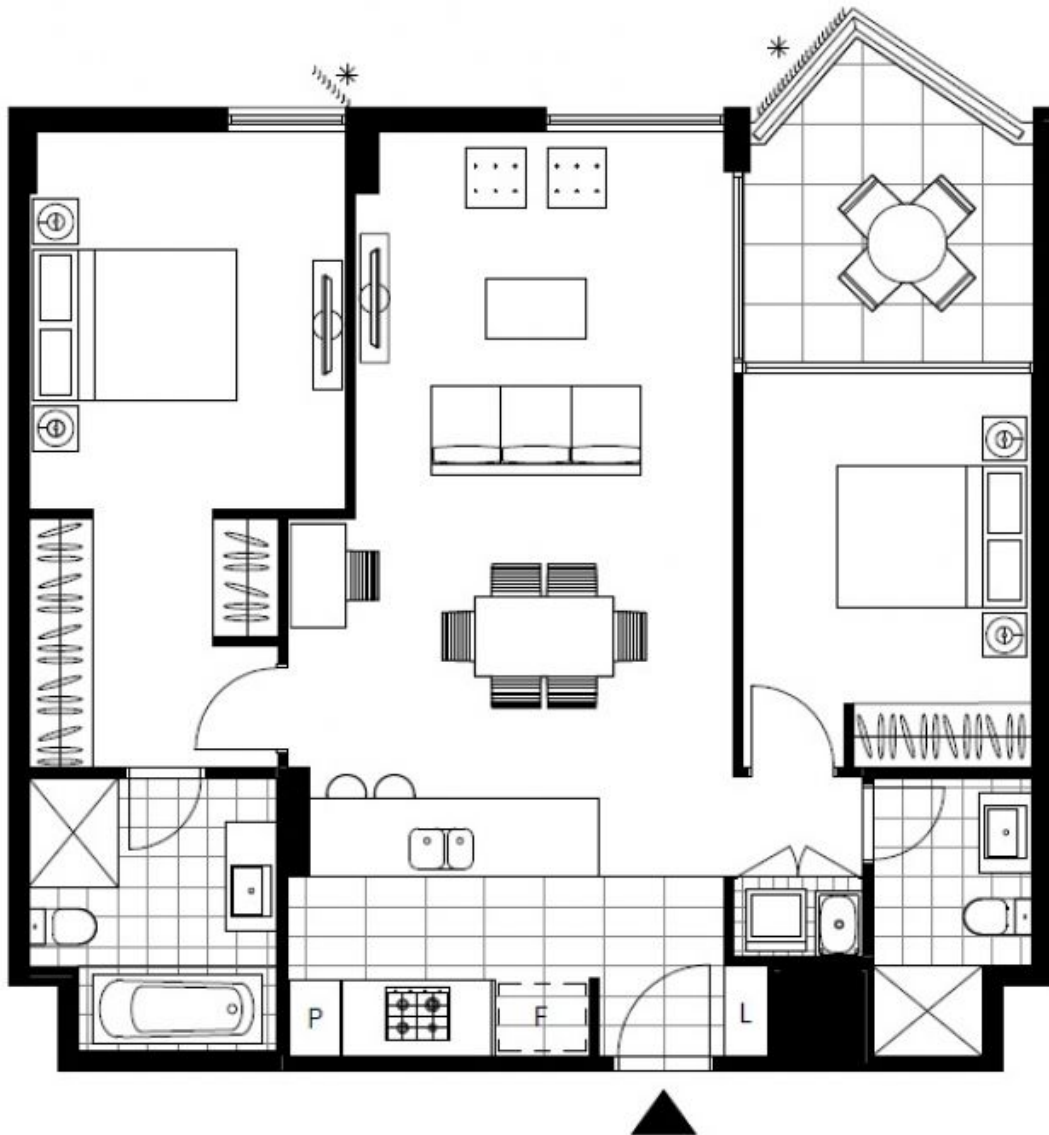
DEPOSIT TAKEN!

- This 92sqm, 3rd floor Apartment features:
Highly Sought After 2-Bedroom Apartment in Harold Park
- Spacious bedrooms with generous built-in wardrobes
 - Open-plan living and dining area, leading to the balcony
 - Contemporary kitchen with stone benchtops and Miele appliances
 - Ultramodern bathrooms with vanity storage, bath in ensuite
 - Sunny balcony, perfect for entertaining
 - Internal laundry with washer and dryer included
 - Secure car space and storage cage included
 - Ducted A/C, video intercom and NBN connectivity
 - 400m to the Heritage-listed Tramsheds, light rail station and public transport

DEPOSIT TAKEN

Contact: Matthew Matthews
02 8588 8888
0418 266 590
Naz Sabzpour
02 8588 8888
0401 545 440

Type: Apartment
Date Available: 04/07/2019
Bond: \$3200
<https://www.resbymirvac.com>



LEVEL 3, 4

Plans shown are only indicative of layout. Dimensions are approximate.

GLEBE, NSW
1302/1 Scotsman Street