

## GLEBE, NSW

1216/1 Scotsman Street

**1**  
BED

**1**  
BATH



**Deposit taken- More apartments available- Call Harry**  
**0401 545 440**

This 54sqm, 2nd floor apartment features:

- Large bedroom with generous built-in wardrobe
- Spacious living and dining area, with access to balcony
- Modern kitchen with stone benchtop and built-in Miele appliances
- Contemporary bathroom with plenty of vanity storage
- Internal laundry with washing machine and dryer included
- Ducted A/C, video intercom and NBN connectivity
- 450m to the Heritage-listed Tramsheds, light rail and public transport

**DEPOSIT TAKEN !**

**Contact:** Naz Sabzpouri  
02 8588 8888  
0401 545 440

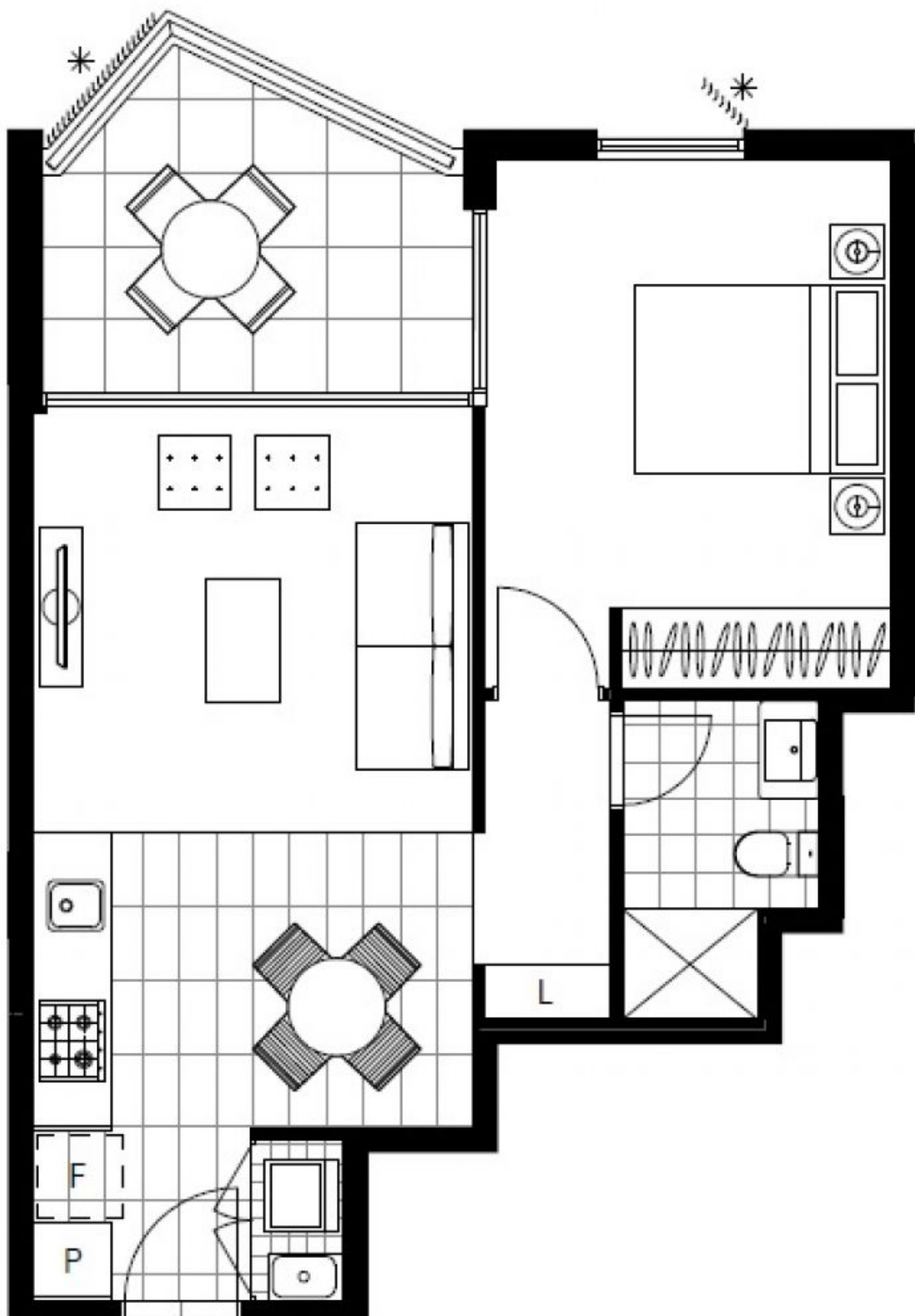
**Type:** Apartment

**Date Available:** 16/03/2021

**Bond:** \$1980

**<https://www.resbymirvac.com>**

For more information please contact Real Estate Services by Mirvac on 02 8588 8888 or email [enquiries@resbymirvac.com](mailto:enquiries@resbymirvac.com) - Your Onsite Agent!



Plans shown are only indicative of layout. Dimensions are approximate.

**GLEBE, NSW**  
1216/1 Scotsman Street

**LEVEL 2**