



## GLEBE, NSW

1212/1 Scotsman Street

1  
BED

1  
BATH



### Modern 1-Bedroom Apartment in Harold Park

This 56sqm, 2nd floor Apartment offers:

- Large bedroom with floor to ceiling built-in wardrobe
- Balcony with shade partition
- Stone bench top and Miele appliances in kitchen
- Modern bathroom with vanity storage
- Open plan living and dining area
- Internal laundry with washing machine and dryer included
- Secure basement storage cage
- Ducted Air Conditioning, video intercom and NBN connectivity
- 500m walk to buses, the light rail and the Tramsheds

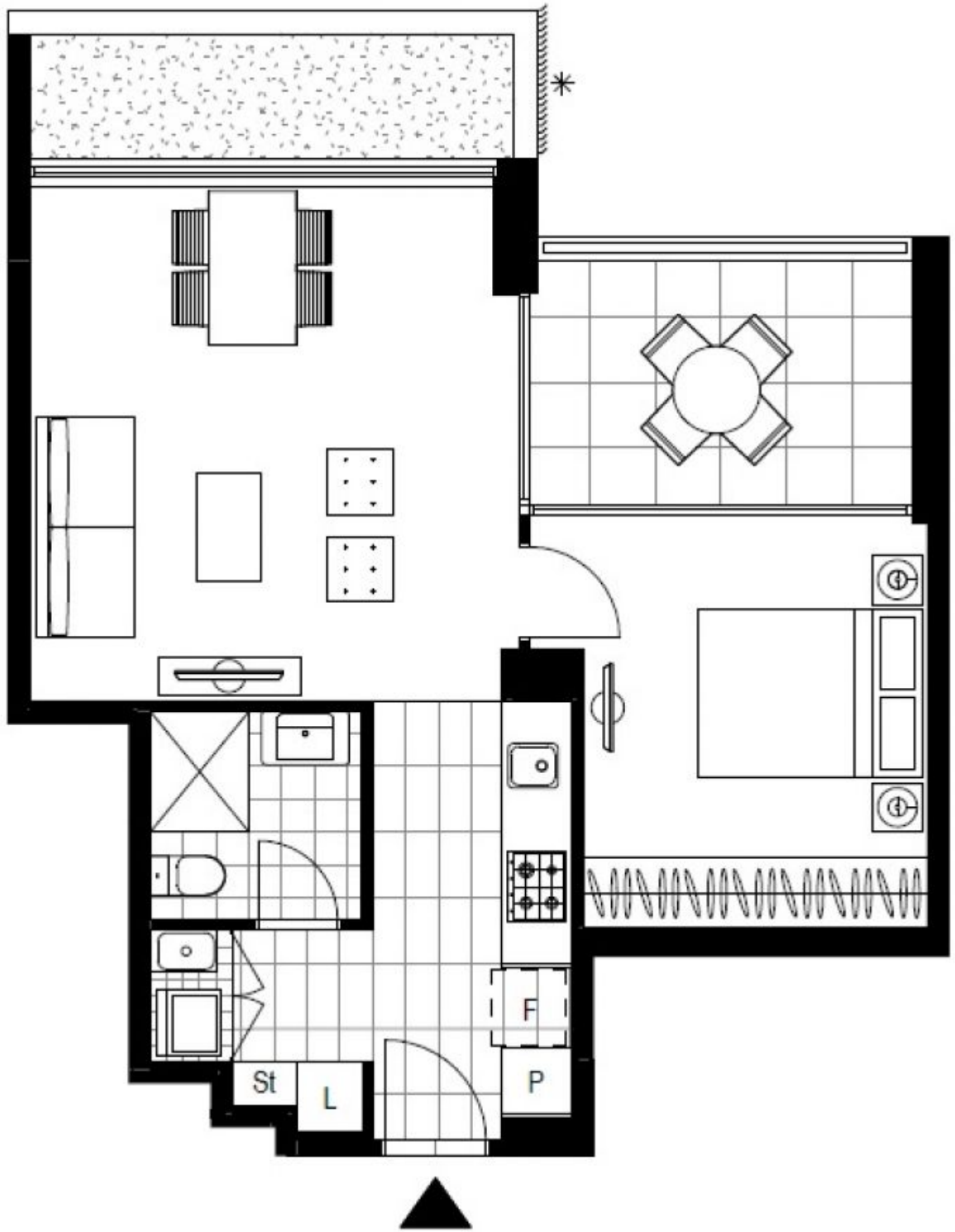
575

**Contact:** Naz Sabzpouri  
02 8588 8888  
0401 545 440

**Type:** Apartment  
**Date Available:** 05/02/2019

**Bond:** \$2300

<https://www.resbymirvac.com>



LEVEL 2

Plans shown are only indicative of layout. Dimensions are approximate.

**GLEBE, NSW**  
1212/1 Scotsman Street