



## GLEBE, NSW

14 Scotsman Street (off Ross St)

**3** BED **2** BATH **2** CAR 

**READY TO MOVE IN NOW - TERRACE \*\*\* Open Sat 14/11 @ 11.00 - 11.20 am \*\*\***  
\*\*\* Open Sat 14/11 @ 11.00 - 11.20 am \*\*\*

3 bedrooms, 2.5 bathrooms, 2 car spaces, incl 1 lock up garage plus additional car space with internal access

Generous, private and supremely versatile, this terrace homes is one of Harold Park's premier terraces.

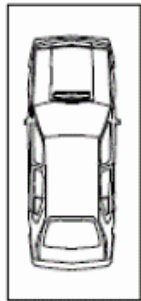
Open-plan living and dining areas, light-filled space flows from a large, galley-style Miele kitchen.

A HUGE generous landscaped courtyard, perfect for outdoor dining and entertaining.

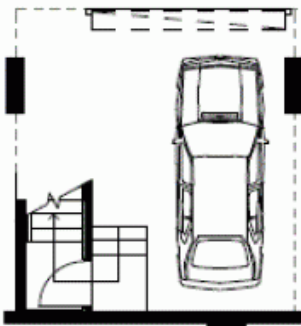
The second living area that could be used as a formal living room or large home office.

**1150**  
**Contact:** Naz Sabzpouri  
02 8588 8888  
0401 545 440

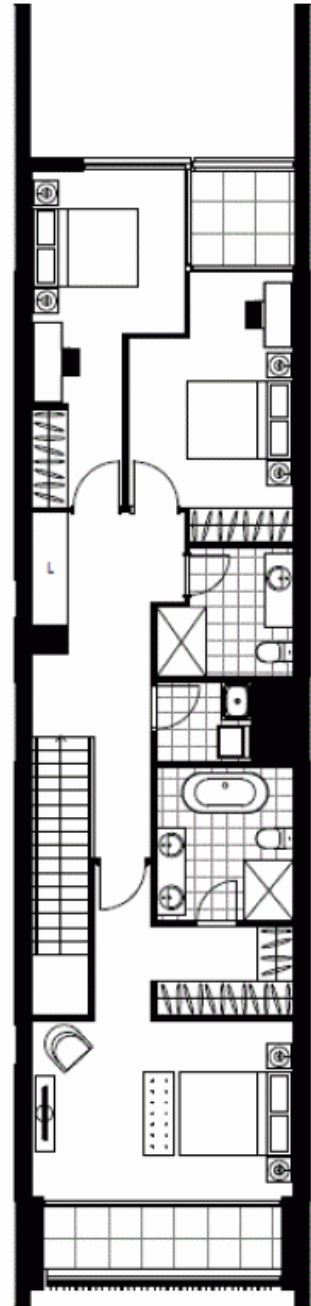
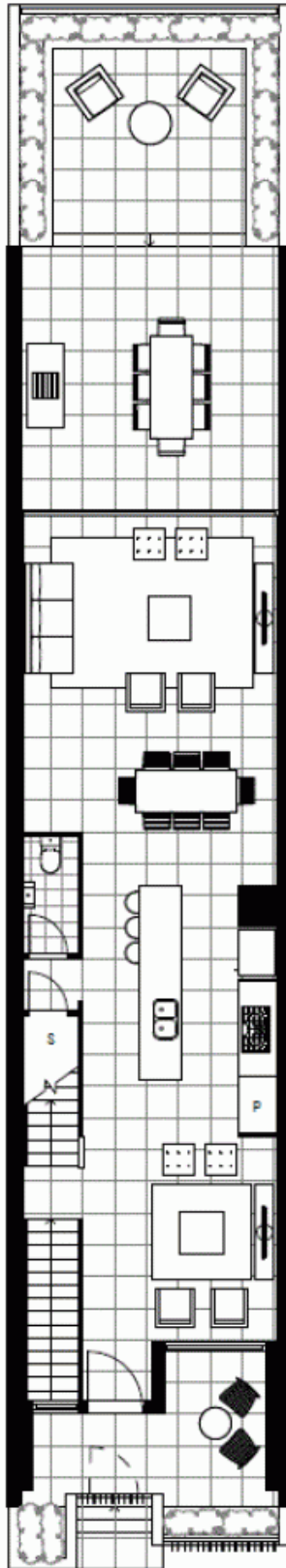
**Type:** Terrace  
**Date Available:** 12/11/2015  
**Bond:** \$4600  
<https://www.resbymirvac.com>



Allocated car space



Lock up garage



Plans shown are only indicative of layout. Dimensions are approximate.

**GLEBE, NSW**  
14 Scotsman Street (off Ross St)