

**GLEBE, NSW**  
605/10 Scotsman Street

**2** BED **2** BATH **1** CAR 

**Highly Sought After 2-Bedroom Apartment in Harold Park**

This 94sqm, 6th floor Apartment features:

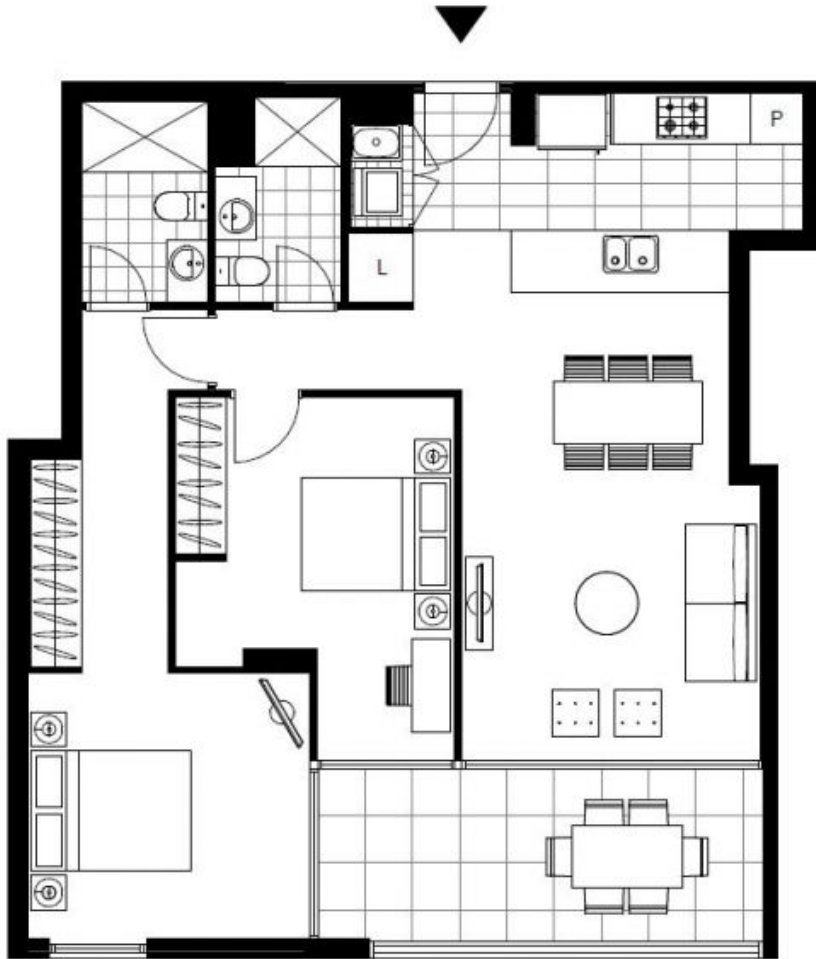
- Spacious bedrooms with generous built-in wardrobes
- Open-plan living and dining area, leading to the balcony
- Contemporary kitchen with stone benchtops and Miele appliances
- Ultramodern bathrooms with vanity storage
- Good size balcony, perfect for entertaining
- Internal laundry with washer and dryer included
- Secure car space and storage cage included
- Ducted A/C, video intercom and NBN connectivity
- 400m to the Heritage-listed Tramsheds, light rail station and public transport

**\$740 Book Your Inspection Now !**

**Contact:** Naz Sabzpouri  
02 8588 8888  
0401 545 440

**Type:** Apartment  
**Date Available:** 04/01/2021

**Bond:** \$2960  
<https://www.resbymirvac.com>



Plans shown are only indicative of layout. Dimensions are approximate.

**GLEBE, NSW**  
605/10 Scotsman Street