

GLEBE, NSW
317/131 Ross Street

2 BED **2** BATH **1** CAR 

Highly Sought After 2-Bedroom Apartment in Harold Park

This 116sqm, 4th floor Apartment features:

- Large bedrooms with generous built-in wardrobes
- Open-plan living and dining area, leading to the balcony
- Contemporary kitchen with stone benchtops and Miele appliances
- Sleek bathrooms with plenty of vanity storage, bath in ensuite
- North East-facing balcony, overlooking the park
- Internal laundry with washer and dryer included
- Secure car space and storage cage included
- Ducted A/C, video intercom and NBN connectivity
- 280m to the Heritage-listed Tramsheds, light rail station and public transport

\$900 per week

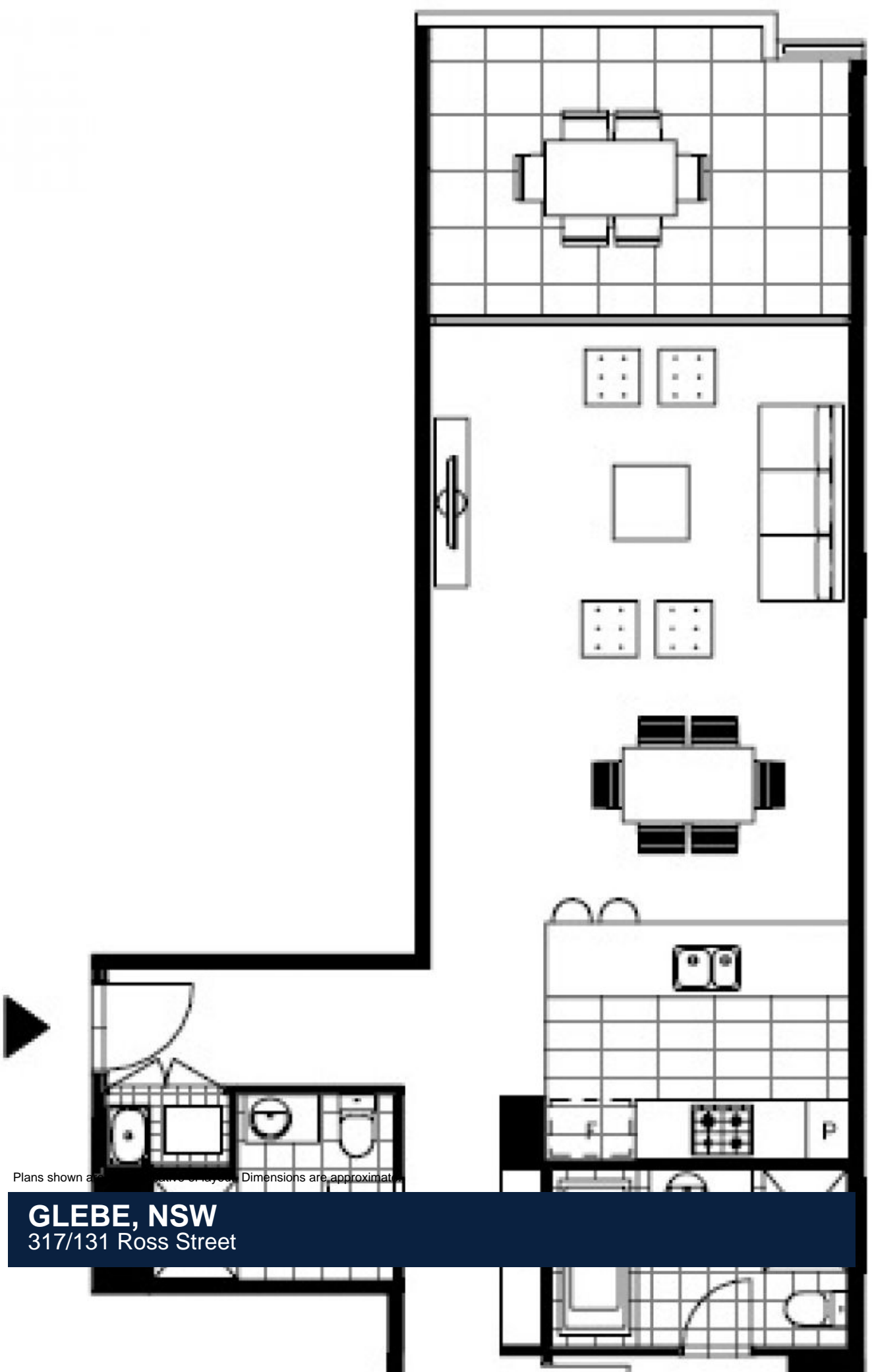
Contact: Matthew Matthews
02 8588 8888
0418 266 590

Type: Apartment

Date Available: 02/11/2019

Bond: \$3600

<https://www.resbymirvac.com>



Plans shown are for information only. Dimensions are approximate.

GLEBE, NSW
317/131 Ross Street