



GLEBE, NSW

606/2 Scotsman Street

2 BED **2** BATH **1** CAR 

DEPOSIT TAKEN

This large 97sqm 2-Bedroom Apartment offers:

- Large bedrooms with floor to ceiling built-in wardrobes
- Open-plan living and dining area flowing onto balcony
- Modern kitchen with stone benchtops and Miele appliances
- Sleek bathrooms with plenty of storage
- Large balcony, great for entertaining
- Internal laundry with washing machine and dryer included
- Secure car space included
- Ducted Air conditioning, video intercom and NBN connectivity
- 300m to the Tramsheds, light rail station and public transport

Apartment does not come with furniture

DEPOSIT TAKEN

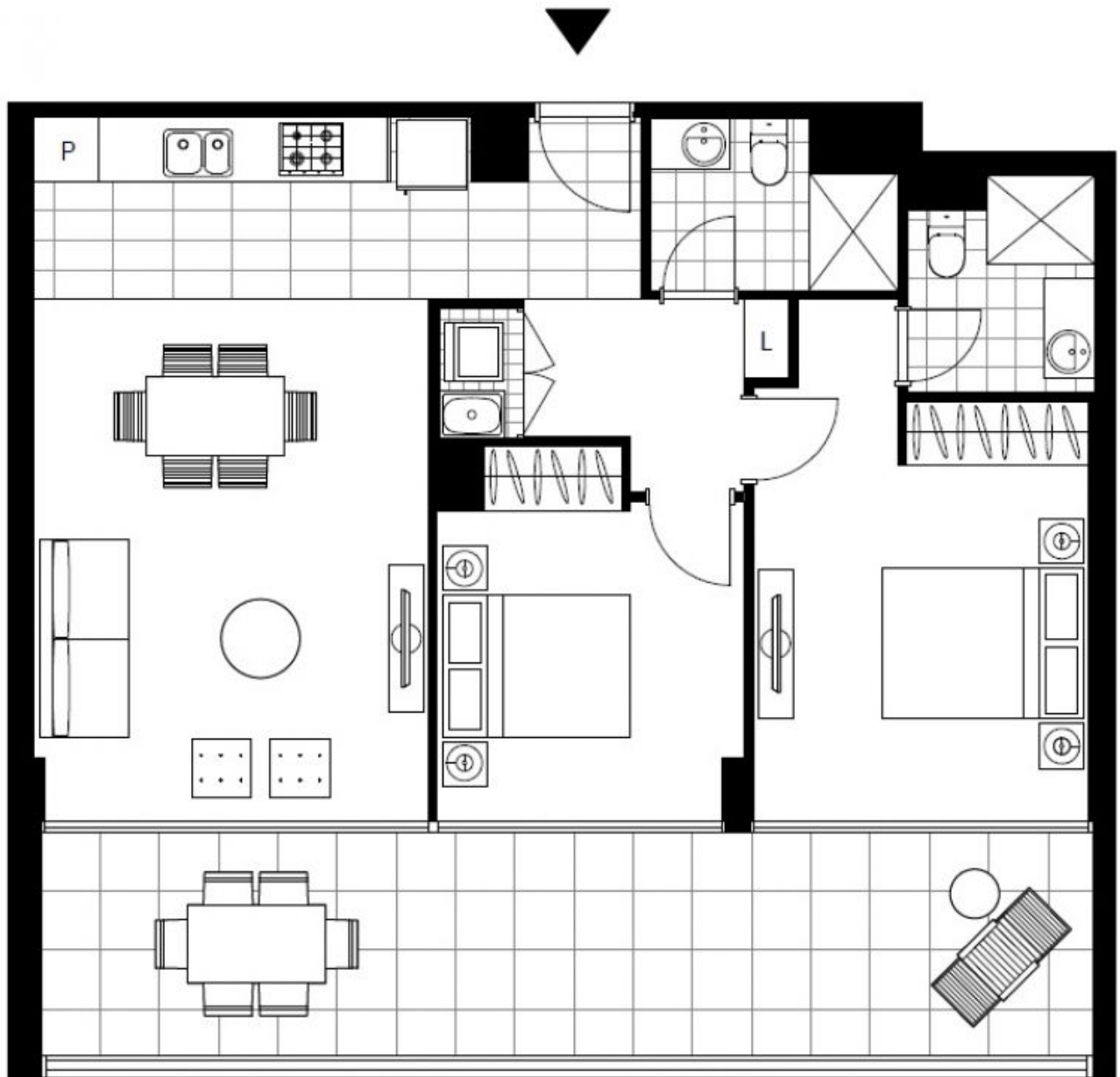
Contact: Naz Sabzpour
02 8588 8888
0401 545 440

Type: Apartment

Date Available: 22/07/2020

Bond: \$3080

<https://www.resbymirvac.com>



Plans shown are only indicative of layout. Dimensions are approximate.

GLEBE, NSW
606/2 Scotsman Street