



GLEBE, NSW

511/105 Ross Street

1
BED

1
BATH



SOLD

Harold Park - 1 Bedroom Plus media

Offering 68sqm, this 1 bedroom apartment offers a quiet aspect orientating to the new park within the premium Eden building of Harold Park by "Mirvac".

- Superbly appointed kitchen with Caesar Stone tops, Miele appliances
- Large bedroom with built - in robes
- Internal laundry with washing machine & dryer INCLUDED
- Ample storage in kitchen
- Within moments walk to public transport, shops, & cafes
- Secure basement storage cage included

Move in and enjoy the local parks, waterfront and cafe lifestyle.

SOLD

Contact:

Matthew Matthews

02 8588 8888

0418 266 590

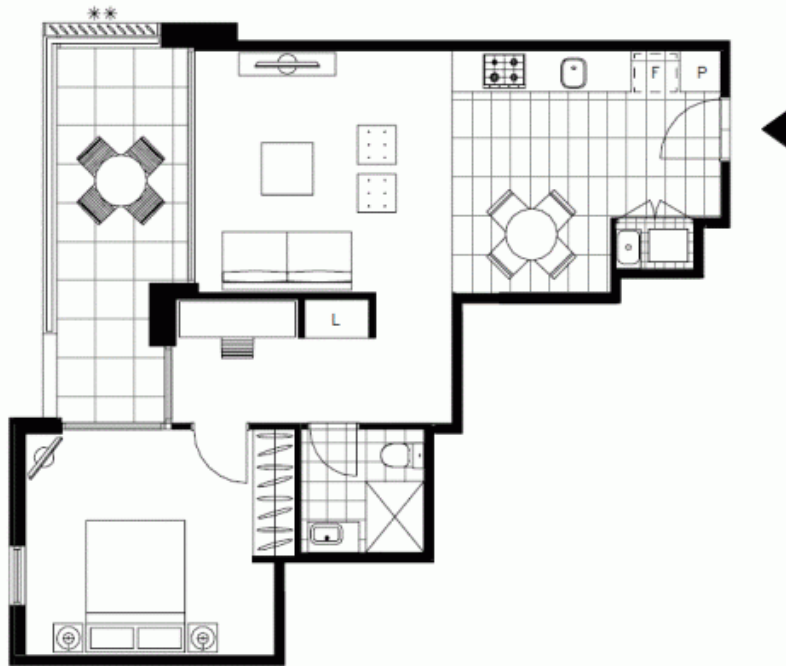
Type:

Apartment

Sold Date:

09/09/2016

<https://www.resbymirvac.com>



LEVEL 5

Plans shown are only indicative of layout. Dimensions are approximate.

GLEBE, NSW
511/105 Ross Street