



## GLEBE, NSW

205/2 Scotsman Street

1 1  
BED BATH



### Modern Studio Apartment in Harold Park

This 50sqm, Studio Apartment features:

- Spacious bedroom area separated by a sliding partition
- Open-plan living and dining area, leading to the balcony
- Contemporary kitchen with stone benchtop and Miele appliances
- Sleek bathroom with plenty of storage
- Generous balcony, perfect for entertaining
- Internal laundry with washing machine and dryer included
- Secure storage cage included
- Ducted A/C, video intercom and NBN connectivity
- 500m to the Heritage-listed Tramsheds, light rail station and public transport

Call 0401 545 440 for more apartments!

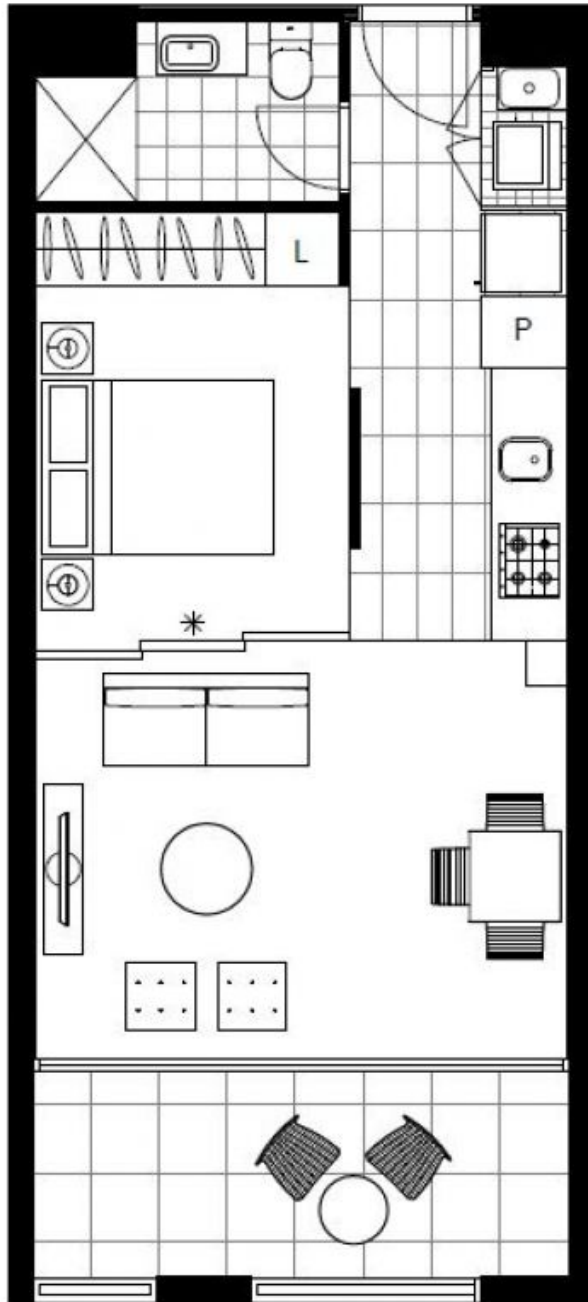
Contact: Naz Sabzpouri  
02 8588 8888  
0401 545 440

Type: Apartment

Date Available: 19/08/2020

Bond: \$1600

<https://www.resbymirvac.com>



Plans shown are only indicative of layout. Dimensions are approximate.

**GLEBE, NSW**  
205/2 Scotsman Street