



GLEBE, NSW

406/22 Scotsman Street

2 BED **2** BATH **1** CAR **RES**

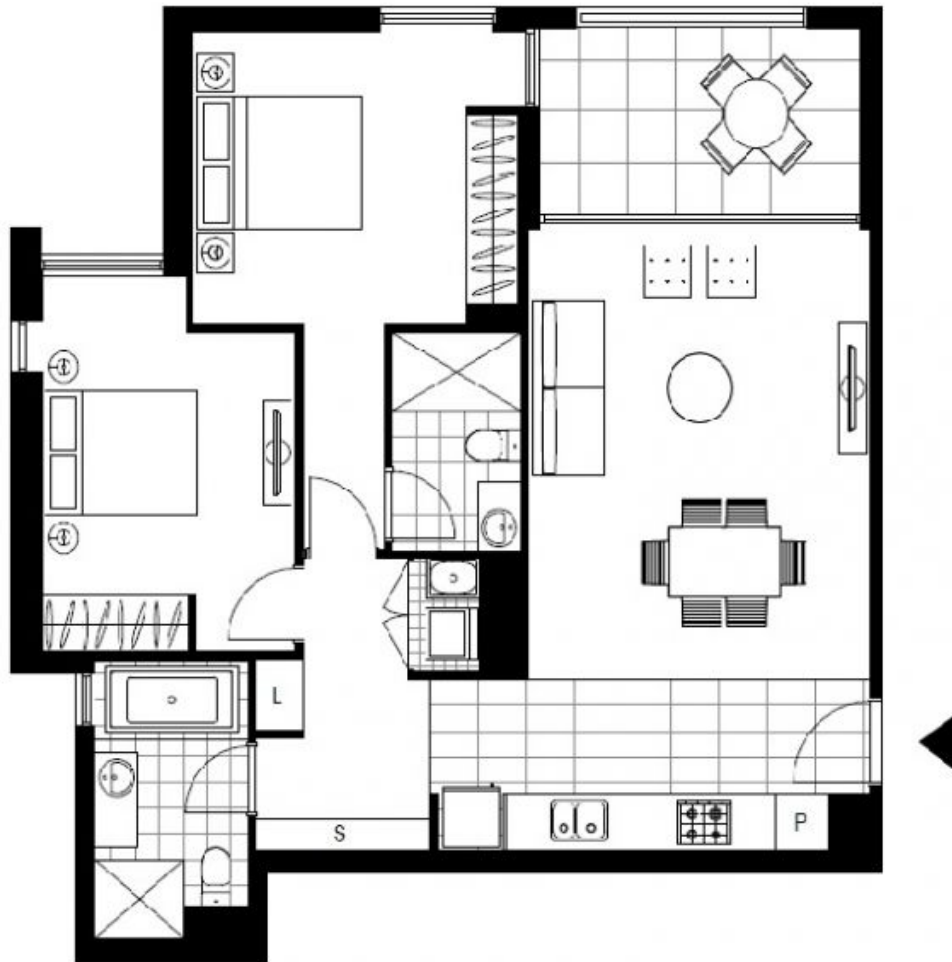
OPEN FOR INSPECTION - SAT 8th AUG - 10.40-11.10AM

This open plan style two bedroom has to offer;

- Large 90sqm 2 Bedroom Unit
- Open Plan living & dining
- Only 2.5km from Sydney CBD
- Developed by Mirvac, complete with the signature quality fixtures and finishes the brand is known for
- Open walkways to the Harbor Foreshore, Blackwattle Bay and beyond
- Minutes to the light rail station, Harold Park is well connected to Darling Harbour, Paddy's Markets Chinatown and Central Station.

Contact: Matthew Matthews
02 8588 8888
0418 266 590

Type: Apartment
Date Available: 22/08/2015
Bond: \$3040
<https://www.resbymirvac.com>



Plans shown are only indicative of layout. Dimensions are approximate.

GLEBE, NSW
406/22 Scotsman Street