



## GLEBE, NSW

407/10 Scotsman Street

**2** BED **2** BATH **1** CAR **RES**

### Brand New 2 Bedroom Apartment In Central Locale

Set within Harold Park, Glebe's newest high end development this luxurious and spacious 2 bedroom unit is located to provide a wonderful lifestyle. Only a short walk from the vibrant eating and shopping experience which Glebe offers. Close to public transport, parks, schools and Universities. Without compromising on space, it offers the ultimate in low maintenance living.

Spacious light filled open plan living and dining areas  
Floor to ceiling glass doors to sun drenched entertainers balcony  
Stylish Miele kitchen with stone bench tops  
2 generous bedrooms both with built ins, master with en suite  
Internal laundry with washing machine & dryer  
Secure parking with storage in basement

**720**

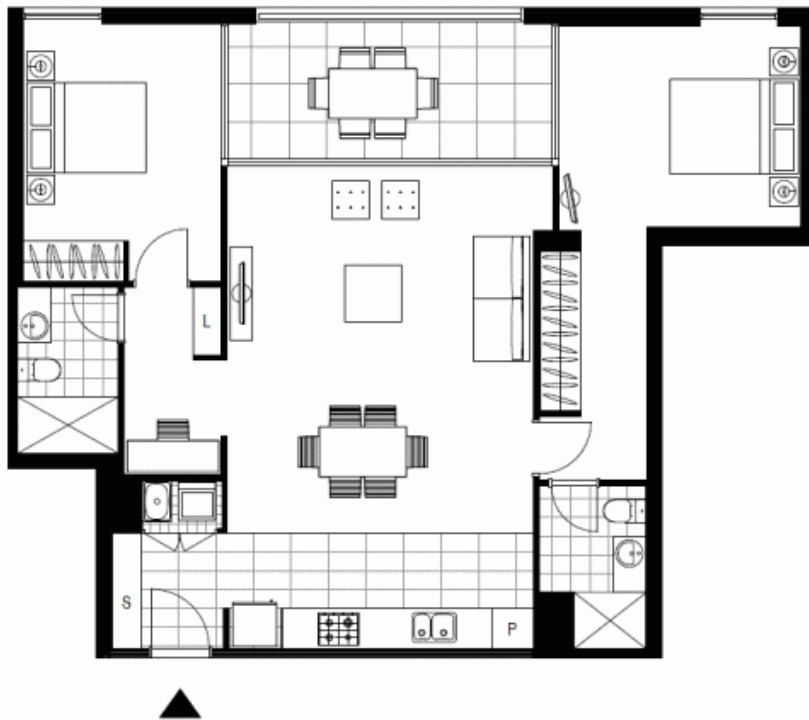
**Contact:** Matthew Matthews  
02 8588 8888  
0418 266 590

**Type:** Unit

**Date Available:** 01/10/2014

**Bond:** \$2880

<https://www.resbymirvac.com>



LEVEL 4,6

Plans shown are only indicative of layout. Dimensions are approximate.

**GLEBE, NSW**  
407/10 Scotsman Street