



GLEBE, NSW

202/2 Scotsman Street

2
BED

2
BATH

1
CAR



Deposit Taken!

This 119sqm, 2nd floor Apartment features:

- Massive 2-Bedroom Apartment plus media in Harold Park
- Spacious bedrooms with generous built-in wardrobes
- Open-plan living and dining area, leading to the balcony
- Stylish kitchen with stone benchtops and Miele appliances
- Ultramodern bathrooms with plenty of storage, bath in main
- East-facing sunny balcony, perfect for entertaining
- Internal laundry with washer and dryer included
- Study nook at entry, perfect for a home office
- Secure car space and storage cage included
- Ducted A/C, video intercom and NBN connectivity
- 300m to the Heritage-listed Tramsheds, light rail station and public transport

Deposit Taken

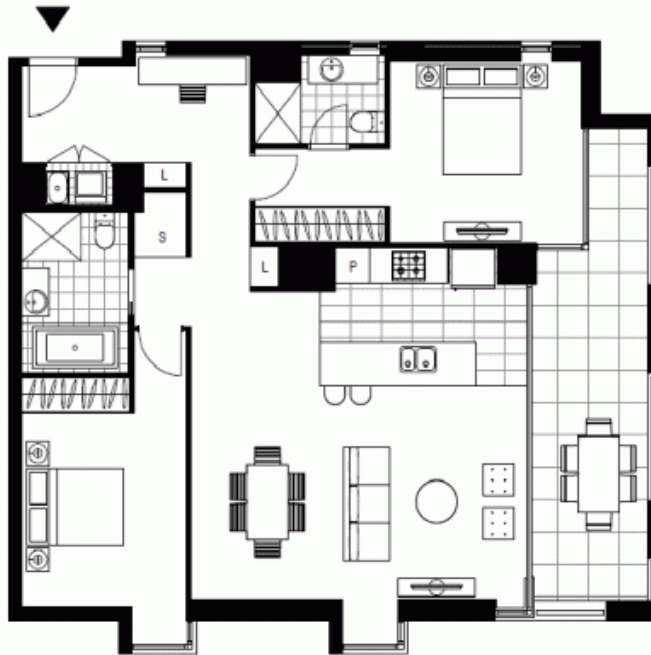
Contact: Matthew Matthews
02 8588 8888
0418 266 590

Type: Apartment

Date Available: 17/02/2020

Bond: \$3400

<https://www.resbymirvac.com>



LEVEL 2

Plans shown are only indicative of layout. Dimensions are approximate.

GLEBE, NSW
202/2 Scotsman Street