



GLEBE, NSW
305/122 Ross Street

1 BED **1** BATH



Light Filled 1-Bedroom Apartment in Harold Park, Glebe

This 56sqm, 3rd floor Apartment features:

- Large bedroom with generous built-in wardrobe
- Spacious living and dining area, leading to the balcony
- Contemporary kitchen with stone benchtop and Miele appliances
- Sleek bathroom with ample storage
- North-East facing balcony, perfect for entertaining
- Internal laundry with washing machine and dryer included
- Secure storage cage included
- Ducted A/C, video intercom and NBN connectivity
- 350m to the Heritage-listed Tramsheds, light rail station and public transport

\$500 per week

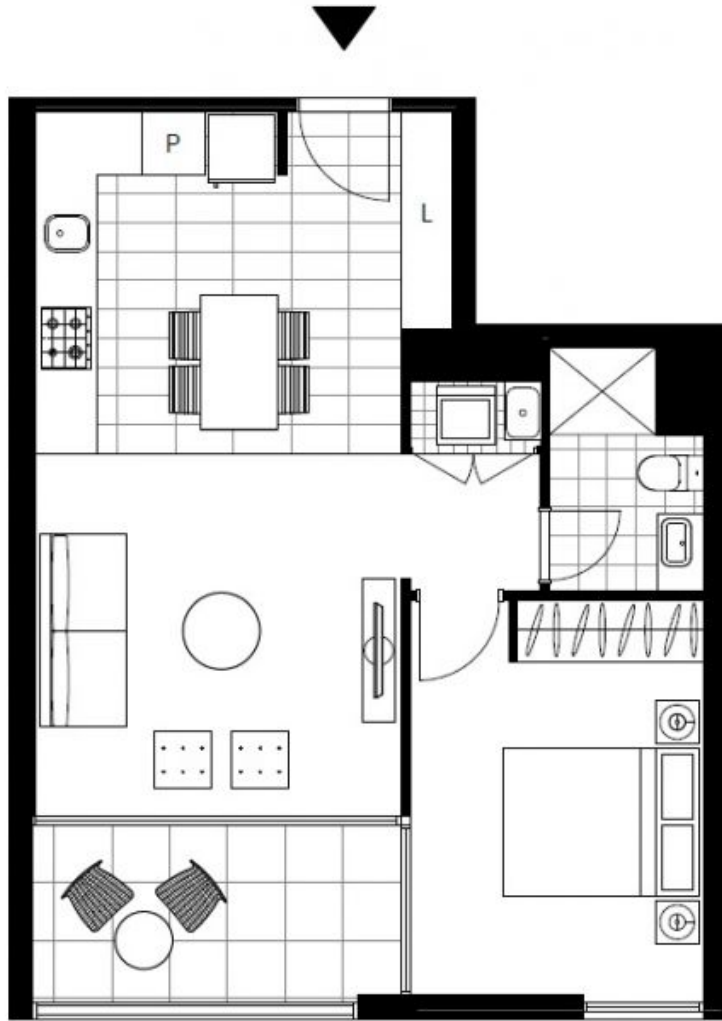
Contact: Naz Sabzpouri
02 8588 8888
0401 545 440

Type: Apartment

Date Available: 29/12/2020

Bond: \$2000

<https://www.resbymirvac.com>



Plans shown are only indicative of layout. Dimensions are approximate.

GLEBE, NSW
305/122 Ross Street