



**GLEBE, NSW**  
405/5 Grattan Close

**2** BED **2** BATH **1** CAR 

### Impeccably designed two-bedroom living near the Tramsheds

A stylish escape in a cool lifestyle setting, this apartment is ideal for those who value space, light and privacy. It enjoys open plan indoor/outdoor entertaining with a creamy colour palette. Central to the Harold Park Hotel, parklands, walkways and the Tramsheds, it's a delight for everyday living or stepping out to essentials and enjoying an active social life.

- Long entrance hall, functional layout, floor-to-ceiling glass
- Open plan kitchen and spacious living/dining flowing out
- Stone bench tops, gas Miele appliances plus dishwasher
- Large covered balcony with lovely leafy residential vistas
- Bedrooms with built-ins, fully tiled bathrooms plus laundry
- Ducted air conditioning, security entrance, lift access

### Contact Agent

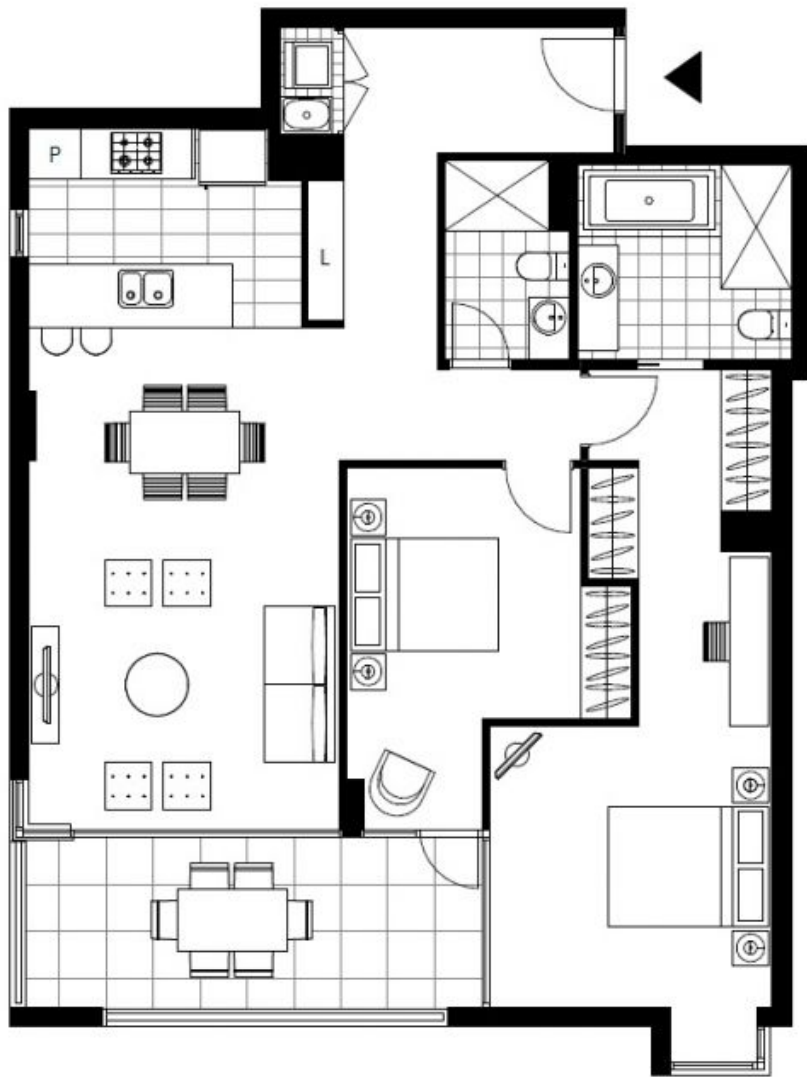
**Contact:** Matthew Matthews  
02 8588 8888  
0418 266 590

**Type:** Apartment

**Date Available:** 17/11/2018

**Sold Date:** 25/06/2021

<https://www.resbymirvac.com>



Plans shown are only indicative of layout. Dimensions are approximate.

**GLEBE, NSW**  
405/5 Grattan Close