



## GLEBE, NSW

402/5 Grattan Close

**2** BED **2** BATH **1** CAR 

### Deposit Taken!

- This 109sqm, 4th floor 2-Bedroom Apartment features:
- Oversized 2-Bedroom apartment in Locarno, Harold Park
  - Large bedrooms with floor to ceiling built-in wardrobe
  - Open-plan living and dining area flowing onto balcony
  - Modern kitchen with stone benchtop and Miele appliances
  - Sleek bathrooms with plenty of vanity storage, bath in ensuite
  - Large entertainer's balcony with access from living area
  - Second balcony accessible from both bedrooms
  - Internal laundry with washing machine and dryer included
  - Secure car space and storage cage included
  - Ducted Air conditioning, video intercom and NBN connectivity
  - 400m to the Tramsheds, light rail station and public transport

### Deposit Taken

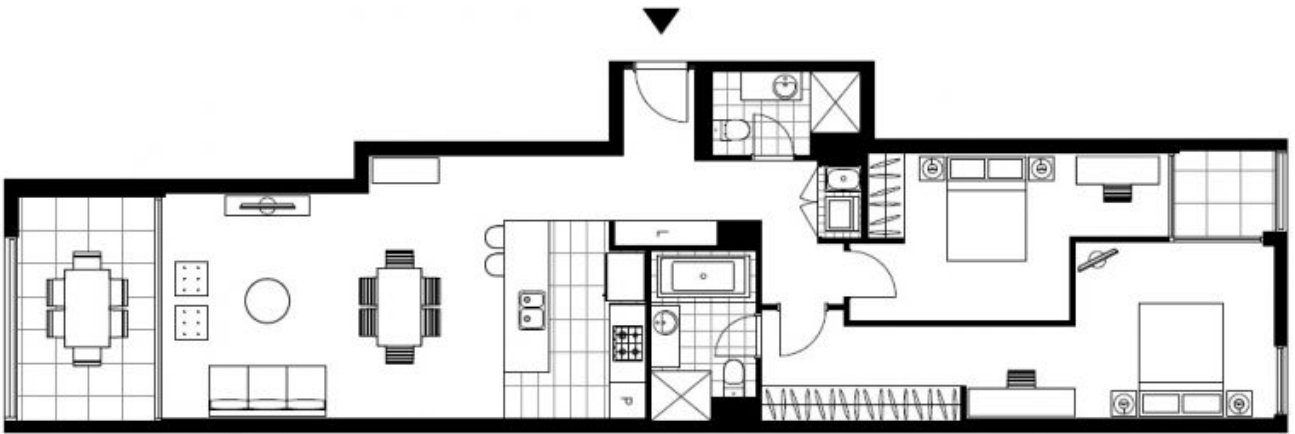
**Contact:** Naz Sabzpour  
02 8588 8888  
0401 545 440

**Type:** Apartment

**Date Available:** 25/03/2019

**Bond:** \$3400

<https://www.resbymirvac.com>



Plans shown are only indicative of layout. Dimensions are approximate.

**GLEBE, NSW**  
402/5 Grattan Close